

1. Introduction

1 - 1. About ITF Finder

“ITF Finder” is a specialized application to manage ITF format files efficiently, by displaying ITF format file on the accessible disks (including network) that is saved in the computer that has ITF Finder already installed.

ITF format is a high security document file that was developed to protect the intellectual property rights.

The strength of the security can be specified unilaterally by the creator of the ITF file, so the viewers cannot handle the document over that range.

In addition, the file cannot be viewed other than using “ITF Viewer”, so it allows you to maintain a high security further.

* About the operation during ITF file,
please refer to “**ITF Viewer Help**” that is available separately.

1 - 2. Operating Environment

■ Supported OS

Windows XP, Windows 2003/2008 Server, Windows Vista, Windows 7, Windows 7 64bit

■ Memory

512MB or more recommended.

■ Empty disk space

5MB or more recommended.

* Need separate work space. It is affected by the paper size, resolution, number of pages.

■ Others

- You need to connect to the internet at the following case.
 1. License Activation.
 2. When viewing the ITF files that has Expiration date, or NET security function.
 3. When browsing Help.
- Speed for ITF conversion and viewing is greatly influenced by the CPU and memory.
If you would like to make the operations faster, please upgrade the above.
- During the ITF browse, it temporarily needs work capacity, equivalent to the size before compression.
When browsing a high-resolution large-format drawing, etc, please be careful about free space of the disk.

Setup steps

2. Starting the program

After you install the program, the program menu and desktop shortcut icon is created. "ITF Finder" will start when you select each shortcut.



▲Desktop icon



▲Program menu

If you opened ITF file with double-click, it skips the main screen and launch the ITF file browsing screen.

3. End of program

To end the program, the following methods are available and they are same as the other general application.

- Click **[X]** button on the top right of the screen.
- Click **[End application]** from the **[File]** in the main menu.
- Right-click on the title of the main screen, to call out system menu and select **[Close]**.

4. Main Screen Overview

You can do any of the operations in the ITF Finder from this main screen.

Title bar

Main menu: To execute every command.

Tool bar: The shortcut buttons for the major operation commands.

File view: To display the ITF files in the selected folders or folder list. Two modes are available: one is the thumbnail mode to display the preview; the other is the report mode to show the detailed information.

Status bar: To display the description about the operation you perform and the information about the item you select.

Folder view: To display folders in the disk in the tree structure.

Unlike Windows Explorer, only folders, objects similar with them and ITF files are displayed.

You can switch display / hide from the menu for the folder view, toolbar, and status bar. In addition, this display state will be carried over from the next start-up.

Change the display/hide mode of each view and bar. If you make a check, the target views and bars are displayed. If you do not make a check, the target views and bars are hidden.

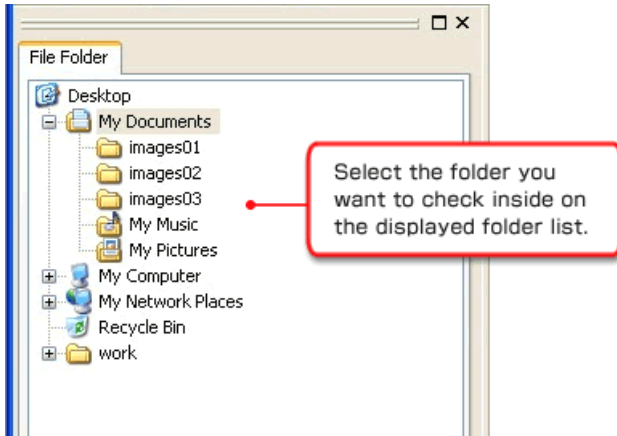
- Thumbnail(H)
- Report(R)
- Report Settings(C)...
- Folder view(F)
- Tool bar(T)
- Status bar(S)

Regarding the folder view, it can be used as float state.

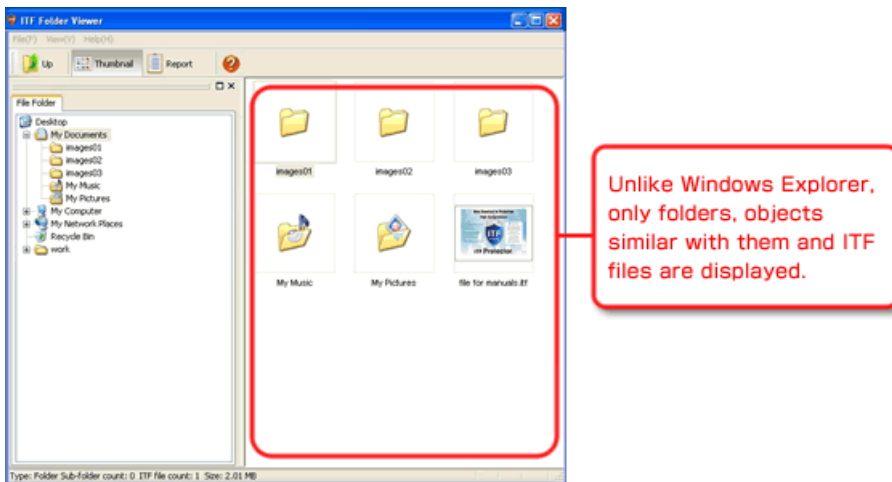
When you use the float status, you can use more space for file view and you can view more files at once.

5. Find the ITF file on the disk

Select the folder from the network or on the local disk, and as you click the Widows Explorer, it displays the list of the ITF file that is in that folder.



ITF files and Subfolder will be displayed in the folder that is selected in the file view.



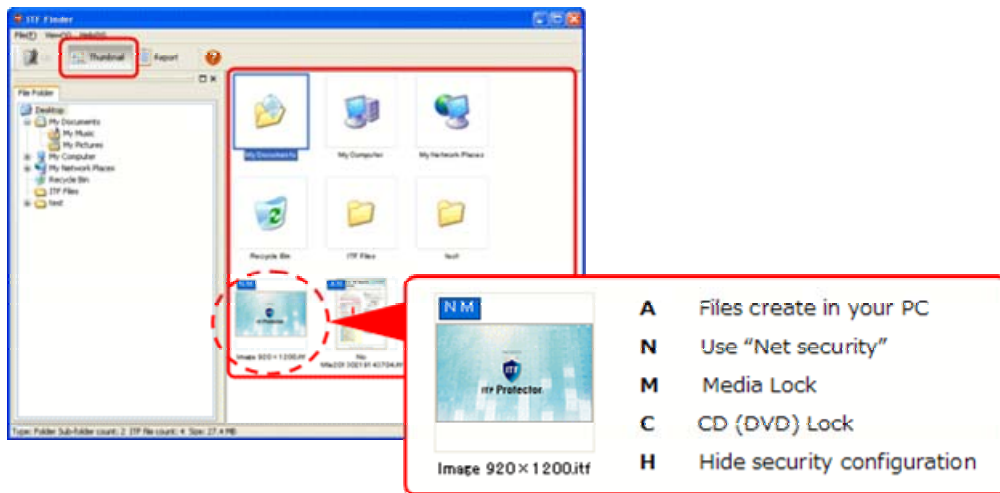
* You cannot operate Move, Copy, Delete, or Rename of the file in the file view for ITF file or ITF file folder, so please perform the normal file operations, such as use the Windows Explorer.

6. Switch the display of the file view

In the “file view”, you can see the list of the ITF file that is in the currently selected folder. Also, you can switch the two distinctive appearances at any time. Please choose a better display format depend on your purpose.

■ Thumbnail format

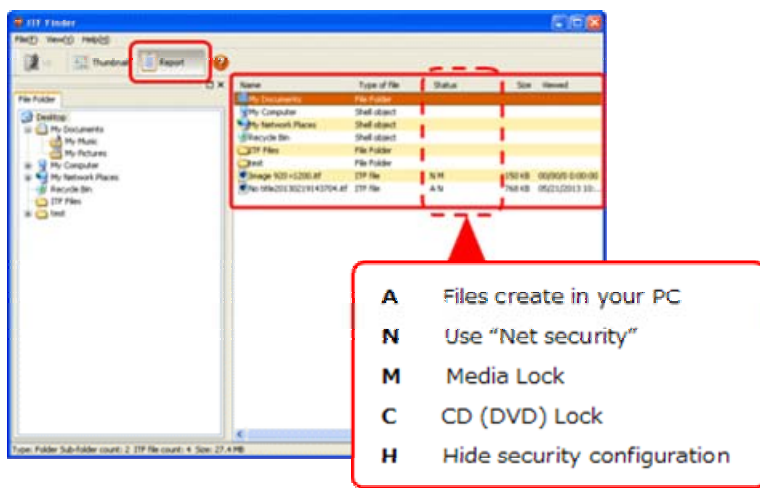
ITF file will be displayed as a thumbnail (preview), so you can visually find a desired file.



If currently selected file is more than one page, you can press [Page UP] / [Page Down] on the keyboard to change the thumbnail display in the page.

■ Report format

Displays report of the variety of information, such as page size and number of ITF file. You can check the detailed information, or sorting each file while looking for the desired file. You can view many files on the screen, so you can check the status of the entire folder.



The display item or order, such as a display width of each column, can be changed as you like.

For setting method, please see **7. Change report display settings**.

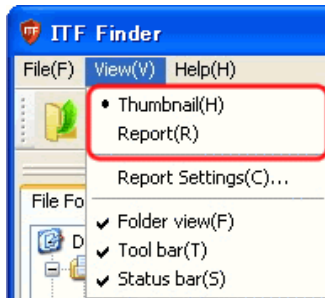
You can change the display format by doing the following steps.

- Change from the toolbar.



Click the button of style you want to display.
✳The current display style is displayed reversally.

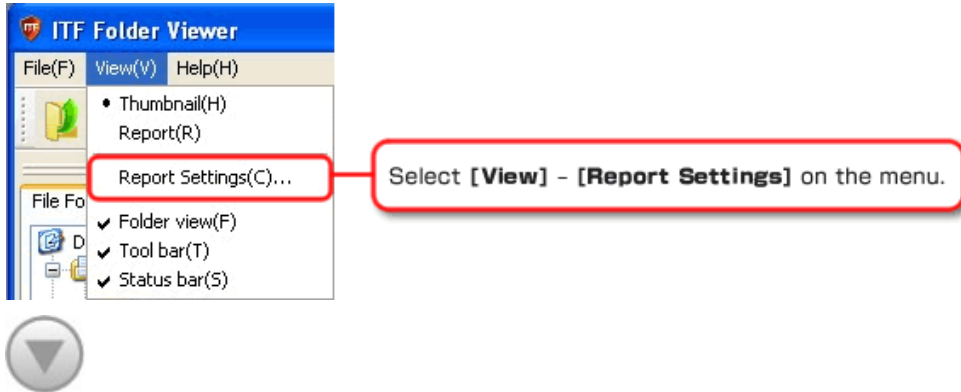
- Change from the menu.



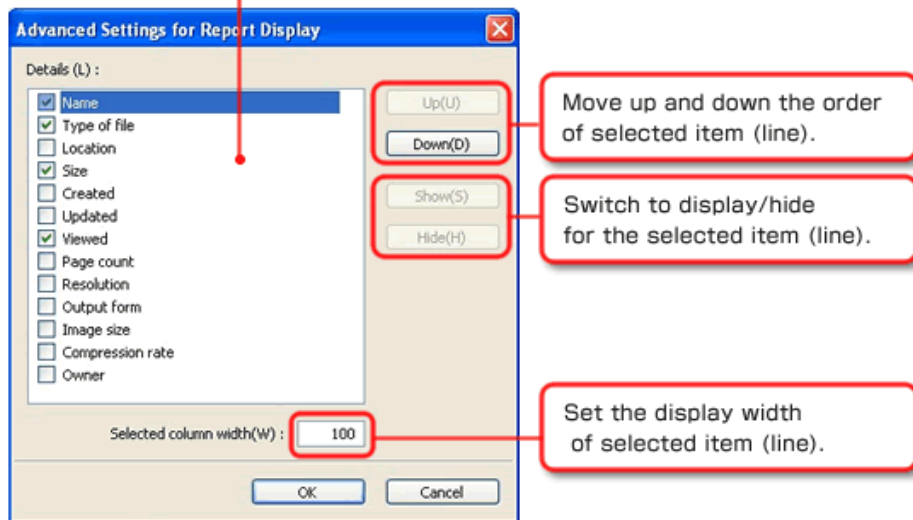
Click the button of style you want to display.
✳The current display style is shown with ●.

7. Change report display settings

In the File View report form display, you can freely change the width of the column, item you want to display, or order of the items, to make it more convenient.



All the items available to display are listed. The check mark next to each item refers to display/hide, the item order is freely moved, and the order you set is applied to the program directly.



When you have finished changing settings, please click [OK] button.

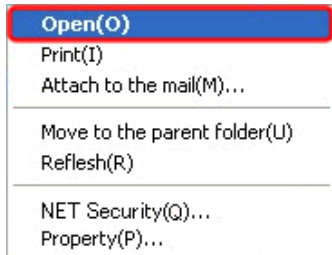
It will be applied to the file list immediately.

In addition, the setting will be saved, so you can use same setting environment from next time start up.

8. View ITF file

Please perform the operation of one of the following to view ITF file in the File View.

- Double-click the item.
- Select an item, then press **[ENTER]** key.
- Right-Click on the item, and select **[OPEN]** from the pop-up menu.



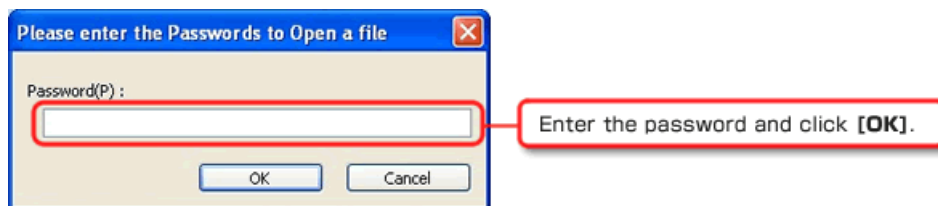
ITF file browsing screen is displayed as shown below.



* For instruction of this screen, please see **ITF Viewer help**.

■ If password has been set for the ITF file

Below authentication password screen will be displayed before ITF file browsing screen appears.



When password authentication is successful, ITF file browsing screen will be displayed.

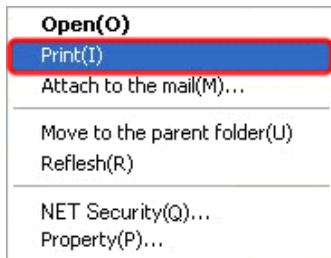
9. Print ITF file

You can print from the ITF file browsing screen, but the operation described here is for performing direct printing without going through the ITF file browsing screen.

To print the ITF file inside the File View, please perform the following actions.

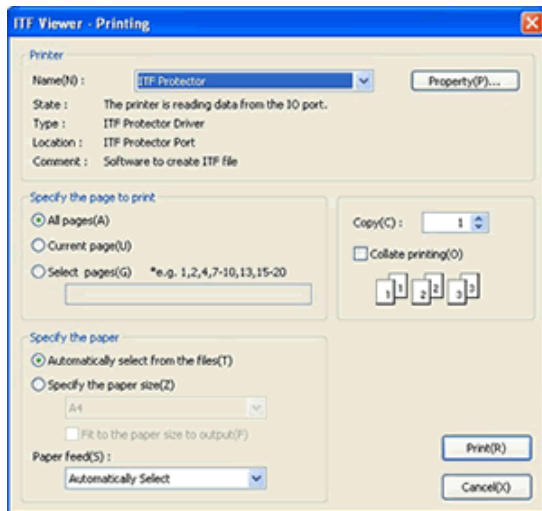
If you do not have a printing permit of the target ITF file, you cannot print.

- Right-click on the item and select [PRINT] from the pop-up menu.



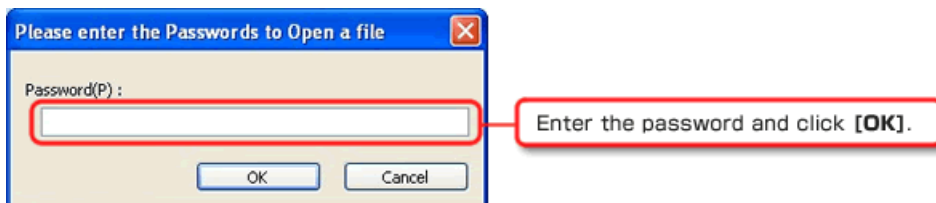
Print option setting screen is displayed as shown below.

Please click the print button after changing the print setting.



■ If password has been set for the ITF file

Below authentication password screen will be displayed before ITF file browsing screen appears.



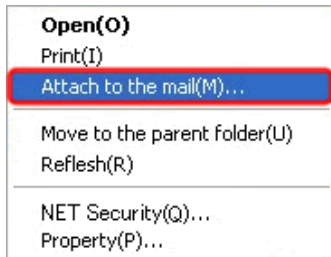
When password authentication is successful, Print option setting screen will be displayed.

10. Attach ITF file to an e-mail

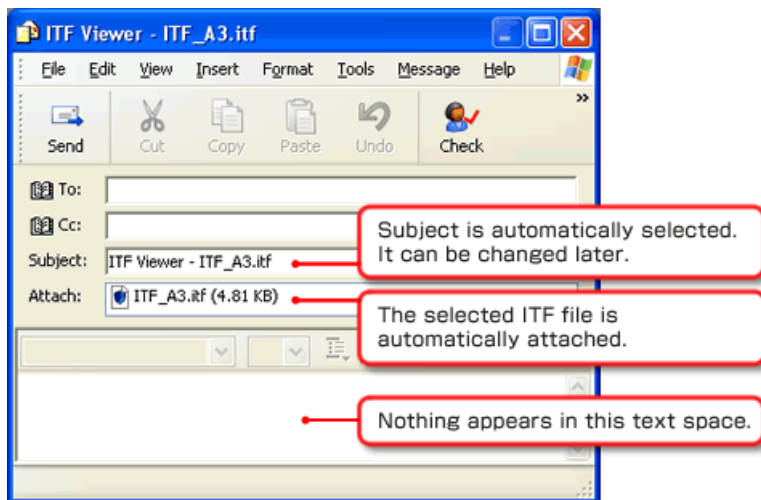
You can attach to the mail from the ITF file browsing screen, but you can also directly display the mail-creation screen with attachment without going through the ITF file browsing screen.

To send the e-mail by attaching the ITF file in the File View, please perform the following actions.

- Right-click on the item, Choose [Attach to E-mail] from the pop-up menu.



When you click the menu on the right, new mail creation screen, with ITF file attached as shown below, will appear.

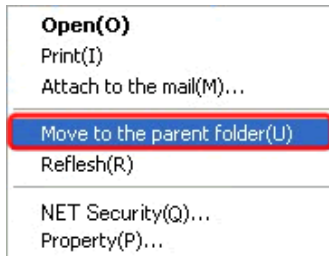


You can send an e-mail with the ITF by filling out destination, body text, and click **[SEND]** button, just as you send the e-mail usually.

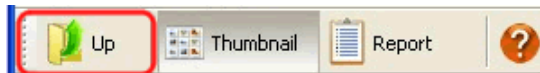
11. See folder in the upper layer

To view the folder one above the currently displayed folder in the File View, please perform the operation of one of the following.

- Right-click on the item, choose [**Move to the parent folder**] from the pop-up menu.



- Click on the [**Up**] button in the toolbar.



12. Update the screen to the latest information

The current displayed state may not match the actual state.

When you take one of the following actions, you can synchronize the current latest information and the screen display.

- Right-click in the folder view or file view, and choose [**Refresh**] from the pop-up menu.



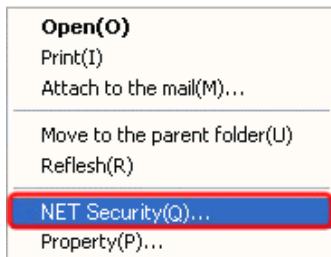
- Press the F5 key

13. Edit NET security settings

“ITF file” that is using the NET security, which must be created by your own PC, can be able to edit the NET security’s security setting.

To change the security settings, please perform the following actions.

- Right-click on the item, choose **[NET security]** from the pop-up menu.



When you click on the menu to the right, the browser will be launched, and shows the site management of NET security.

There is a times, a warning message as shown below, is displayed depend on your browser. Please continue the display by choosing “permission to view”.



With regarding How to Use security configuration management site, please see **[How to Use This Page]** in each page within this site.

14. See ITF file property

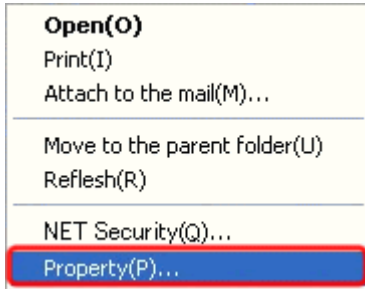
ITF file can set a variety of security from the creator side, with high compress imaging of the original document.

In addition, in order to reproduce the original document as accurately as possible, it can take over a variety of information from Page setup or Resolution.

With ITF Finder, as long as the creator of the file allows, you can browse these information.

Please perform the following actions to view the properties of the ITF file.

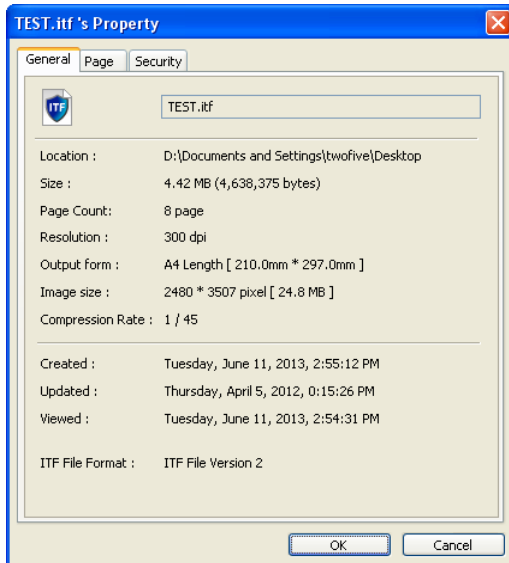
- Right-click on the item, select **[Property]** from the pop-up menu.



When you click on the menu to the right, the selected ITF File property will be displayed.

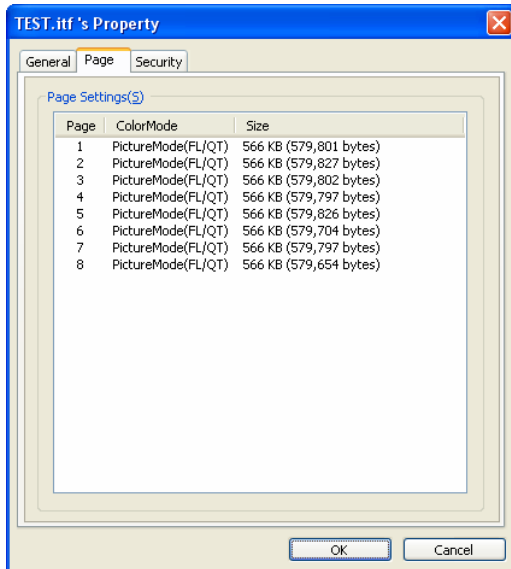
- **General Tab**

A general field such as compression rate or file information can be browsed by anyone.



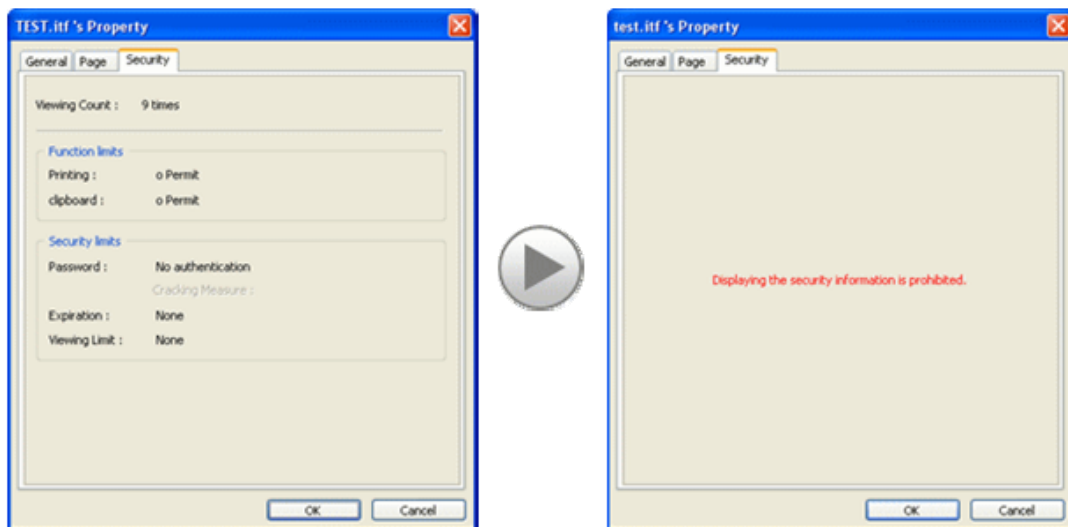
- **Page Tab**

Shows the data size and color mode setting of each page.
Anyone can browse.







- **Security Tab**

This topic is related to the file security, and if the author is not permitted, this page does not appear.



- List of properties

Base Items	Display	Description
File name	–	File Name
Location	–	Folder name of the storage location (full path)
Size	Size (Byte Size)	File size
Page Count	X page	The total number of page
Resolution	X dpi	Resolution at the time of creation
Output form	Form name Length/Rotated [Specification size]	Paper setting at creation
Image size	X * Y pixel [bitmap size]	Vertical and horizontal and full size of 1 page
Compression Rate	1/X	Comparison compression ratio of full-color bitmap
Created	Month Day Year, H:M:S	Date and time the file was created
Updated	Month Day Year, H:M:S	Date and time the file was updated
Viewed	Month Day Year, H:M:S	Date and time the file was last viewed
ITF File Format	ITF File Version X	ITF file version. The ITF file created in your PC is displayed as  icon.

Security items	Display	Description
Viewing Count	X times	Cumulative views so until now
Cracking Count	X times	Cumulative number of times authentication cracking until now
Printing	Permit, Not permit	Print advisability
clipboard	Permit, Not permit	Image copy to clipboard advisability
Password	Authentication is required or not	Password setting existence
Cracking Measure	Permit until x times, Not permit	Allowed number of authentication errors (if none, it is unlimited)
Expiration	Until YYYY/MM/DD or None	Expiration setting existence
Viewing Limit	Permitted x times or No limitation	View limit setting existence
Icons	 NET security is set to this ITF file	
	 Media limit is set to this ITF file	
	 You can only view this ITF file from CD-ROM, etc.	

15. About security

When create ITF file, author will apply various functions and security related limits.

When using ITF Finder or ITF Viewer to browse the file, the browser will be accordance with the restrictions.

This chapter describes what the limitations are, and what kind of movement and operation it would become.

1. Functional Restriction

• Print Limit

ITF file with the print limit cannot be run by with the “print” command literally.

This function can be used to prevent of paper-based information leakage.

• Clipboard Limit

When the ITF file with the clipboard limit is opened, and yet, if the ITF viewer is not a minimized window (Stored in the task bar state), you are not able to copy the screen to the Clipboard, due to the “PrintScreen” key.

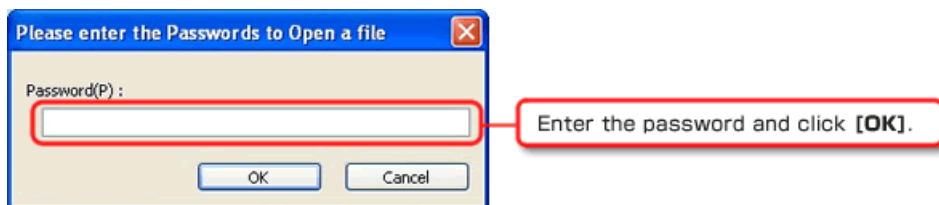
It can be used when you want to prevent image information leakage.

2. Security Restrictions

• Password Restrictions

If you try to open the ITF file with the password restrictions, the screen that requests password authentication will appear before file actually opens, and you cannot browse the file until you put the correct password.

This restriction is used when to prevent information leakage to the person that does not share the password.



Cumulative number of password authentication error is also counted, and in some cases, if the password authentication error is more than a specified number, it would be regarded as a cracking act (Brute-force password), and there is a setting that can delete the file in such case.

[Security Violation]

• Expiration Date

With ITF file with the expiration date, you will not be able to browse through if it is past the specified date literally.

This function is used to a document that has time restriction, etc.

The border is the change of date, it will be midnight.

When you try to open a file that has expired, the file is deleted.

[Security Violation]

- **Browse Number Deadline**

Each time ITF file is opened in ITF Viewer, it will count the cumulative number of views. Once ITF file with view time limit is viewed the specified number of times, it will not be able to be viewed from the next time.

This function is used to prevent diffusion, etc, when file is spilled.

When exceeded the limit views, the file is deleted.

[Security Violation]

- **Media Limit**

ITF file that has the media limit cannot be viewed outside of media such as an SD card or USB memory that file crater has specified.



- **CD-ROM/DVD-ROM fixation**

You cannot view the ITF file that is fixed to the CD-ROM/DVD-ROM, if it is not the state that is recorded in the DVD-ROM and CD-ROM.



3. ITF file self –destruction at Security Violation.

“ITF Files Self-Destruction” is a mechanism that disappears ITF file without trace, when above item “2” is described as [Security Violation].

In case of the high degree of important information, there is “Creator of the ITF file sets the restrictions, and extinguishes the file when there is a violation”, and with this, it enables the information exchange more secure.

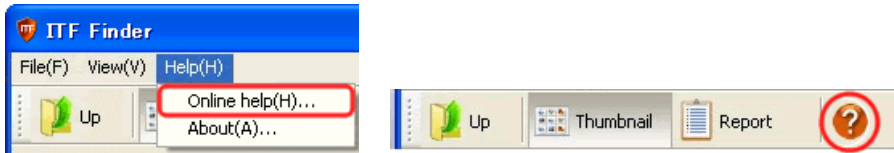
4. NET Security

Security settings are managed on a Web server, and Security setting on the Web server will be applied to the files that are encoded by e-mail attachments, etc.

This is used to keep viewers to follow the security setting strictly.

16. See Help

When you do not understand how to operate ITF Finder, you can see the online help over the Internet.

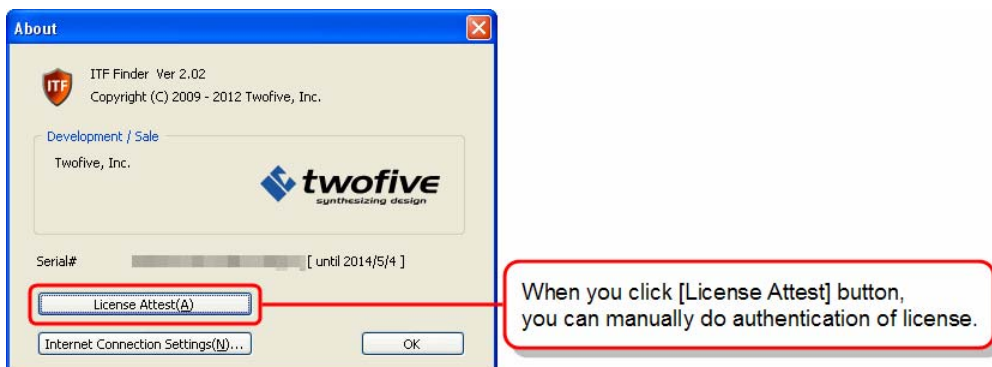


- Start the browser and display the online help of the ITF Finder.
Shortcut Key: [F1]

17. See Version Information

You can check the version of your current using ITF Finder, or you can manually activate the license activation.

Shortcut Key: [Ctrl + A]



For license authentication, if 7 days has passed from the last day you have authenticated, ITF Finder will automatically check license authentication, and if it cannot authenticate, ITF file will no longer be displayed.

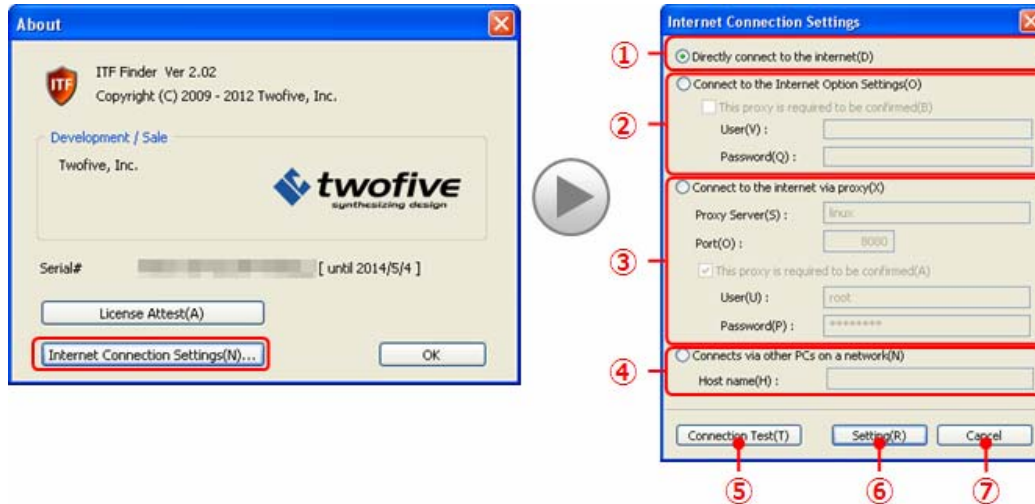
When you bring out the PC to an environment that cannot connect to the Internet, such as business trip, we recommend you to perform the license activation manually in advance, due to avoid having ITF Finder to be unusable by the failure of license authentication activation.

* If you are to browse ITF file with view time-limit or Net security, you must be connected to the Internet.

18. Adjust Internet Connection Settings

During ITF license authentication, or to browse time-limited ITF file or ITF file with NET security settings, you must be connected to the Internet.

To make the settings, please have "About" screen displayed, and click the **[Internet Connection Settings]** button.



- ① If you can connect directly to the Internet, please select this option.
- ② If you want to use the Internet connection settings of Windows, please select there. In addition, If the proxy server requires authentication when connecting, please put a check in **[This proxy is required to be confirmed]** and enter your password and user ID.
- ③ If you are connected to the Internet through a proxy server, please select here and enter the proxy name (or IP address), and port number. In addition, if the proxy server requires authentication when connecting, please put a check in **[This proxy is required to be confirmed]** and enter your password and user ID.
- ④ If you perform activation through our product's "License Manager", please select here and enter the connection destination PC name or IP address. License Manager is a reliable program that carries out on behalf of the operations that requires internet connection for PC that is resides as a service and be connected to the Internet on the network (WAN or LAN), and for PC that is using our licensed products, and is prohibited to connect to the Internet on the network. License Manager is available as a free download from "My ITF".
- ⑤ Please click this button when you completed the setting for the required item. You can test if you can actually connect to the Internet from the setting on the screen.
- ⑥ Apply / Save the settings and exit this screen. Before you click this button, please check the Internet connection by performing connection test.
- ⑦ Do not reflect the setting and exit this screen.