

# 1. Introduction

## 1 - 1. About the ITF Protector

“ITF Protector” is an application to create an ITF file Format.

ITF format is a document file with high security that was developed to protect the intellectual property rights.

The strength of the security can be unilaterally specified by the creator of the ITF file.

Therefore, viewer of the file can only handle the document within the range allowed.

In addition, ITF file can only viewed by the read only application called “ITF Viewer”, to allow it to maintain a further high security.

## 1 - 2. Operating Environment

### ■ Supported OS

Windows XP, Windows 2003/2008 Server, Windows Vista, Windows 7, Windows 7 64bit

### ■ Memory

512MB or more recommended

### ■ Empty disk space

5MB or more recommended

\* Working capacity is affected by the paper size, resolution, number of pages.

- The indication of working capacity (In the case of A4 size / 1 page)

Resolution (dpi)	Necessary Capacity
300 (Default)	About 30MB
200	About 15MB

### ■ Other

- Internet connection is required for the following situation.
  1. License Activation
  2. When create ITF file uses Net Security
  3. When viewing Help (this document)
- Speed of conversion and browsing ITF is greatly influenced by the CPU memory.  
If you would like to make operations faster, please upgrade these performances.
- During ITF browse, working capacity equivalent to the pre-compression is needed temporarily.  
When browsing a high resolution large-format drawing, please watch your free space on the disk.

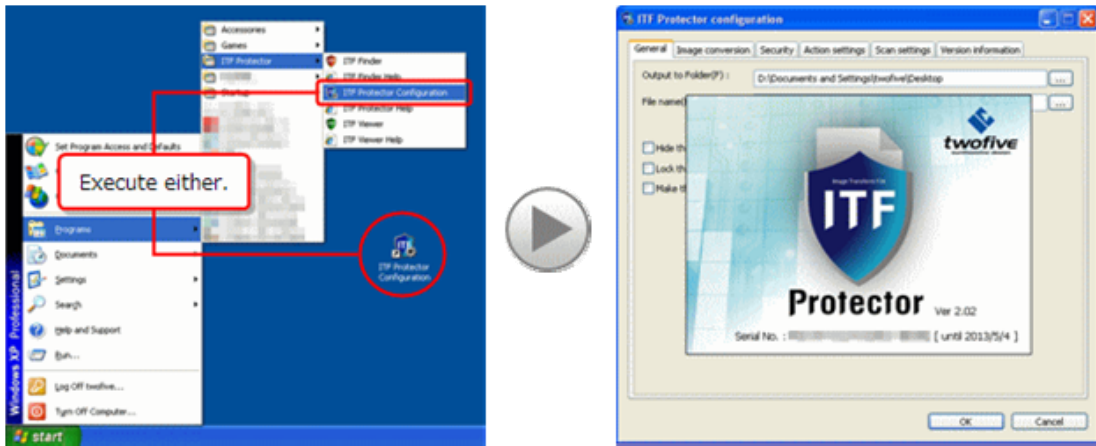
**Setup steps**

## 2. ITF Protector Operation Setting

You can change the operation at the ITF file creation.

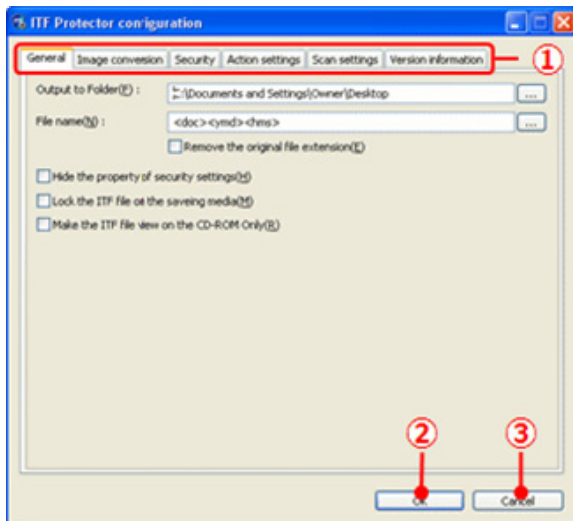
Please select the **[ITF Protector Configuration]** from the program menu of the Windows.

In addition, if you chose to create an icon on the desktop during installation, please double-click the icon on the desktop.



### 2 - 1. ITF Protector Configuration screen

You can set the operation of the ITF Protector in this window.



① All settings are organized by category.

Click on each tab to switch the setting page of the item, corresponding to the tab.

- **[General]** tab

This tab configures the settings for the location to create file and the name of file.  
(Please see **2 - 2. Configuration - [General] tab.**)

- **[Image Conversion]** tab

This tab configures the settings for the image processing within data.  
(Please see **2 - 3. Configuration - [Image Conversion] tab.**)

- **[Security]** tab

This tab configures the settings for the security of file.  
(Please see **2 - 4. Configuration - [Security] tab.**)

- **[Action Settings]** tab

This tab configures the settings for operation of ITF Protector.  
(Please see **2 - 5. Configuration - [Action Settings] tab.**)

- **[Scan Settings]** tab

This tab configures the settings for scan filter.  
Scan filter is an information configuration for converting the ITF file automatically by conjunction with the multi function machine or scanner.  
(Please see **2 - 6. Configuration - [Scan Settings] tab.**)

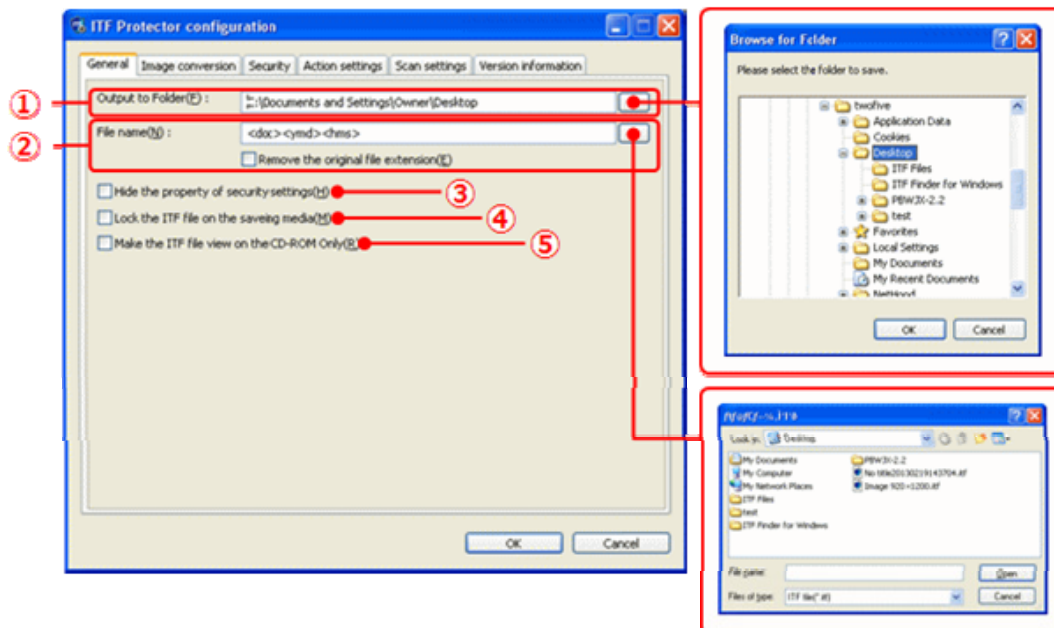
- **[Version Information]** tab

This tab displays the product information of ITF Protector.  
(Please see **2 - 7. See help - [Version Information] tab.**)

- ② Save the configuration and exit.
- ③ Exit without saving the setting.

## 2 - 2. Configuration - [General] tab

Please click **[General]** tab, follow the description, and set each item.



- ① Specify the destination folder for ITF file.  
You can also click the [...] button to select and input from the "Browse for Folder" screen.
- ② This function optionally specifies the name of the ITF file.  
You can use automatic replacement of the file name with using the following character string.
  - <ymd>  
It will be replaced by the creation date of the file (year, month, and day).



- <hms>

It will be replaced by the creation time of the file (hour, minute, and second).

- <doc>

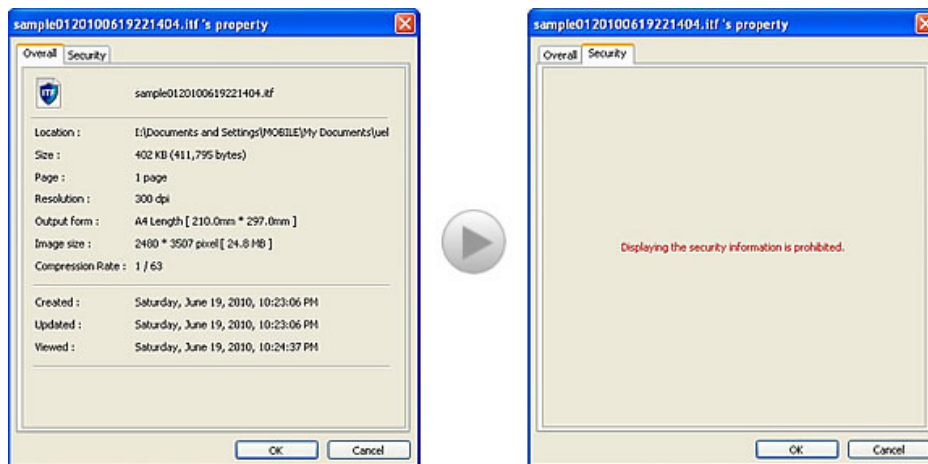
It will be replaced by the document name of the original data.

If you check **[Remove the original file extension]**, it will replace with extension removed state.

E.G. if you enter "ABC<ymd>DEF", translated into "ABC**20100115**DEF".

(If it is made on January 15, 2010.)

- ③ If you check this area while creating ITF file, the configuration information about the security will not be published as below when you browse it with the ITF Viewer.



- ④ If you check this area while creating ITF file, you will not be able to browse it outside of the destination media (USB memory or Hard disk) you specified when you created the file.



\* You cannot use this function as conjunction with the below feature, **[Make the ITF file view on the CD-ROM only]**.

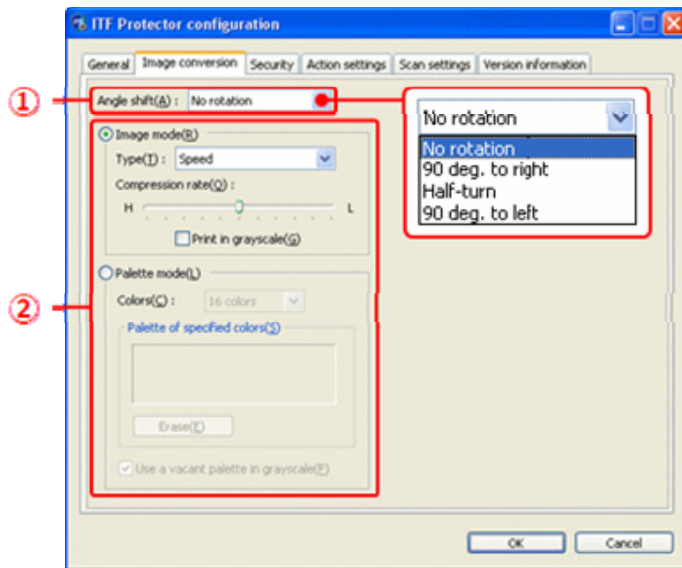
- ⑤ If you check this area while creating ITF file, you will not be able to browse if the file is not in the state that has been recorded in the CD-R/RW or DVD-R/RW.



\* For this feature, it is required to combine with Net security to perform. (Please refer to the **2 - 4. Configurations - [Security] tab.**)

## 2 - 3. Configuration - [Image Conversion] tab

Please click **[Image Conversion]** tab, follow the description, and set each item.

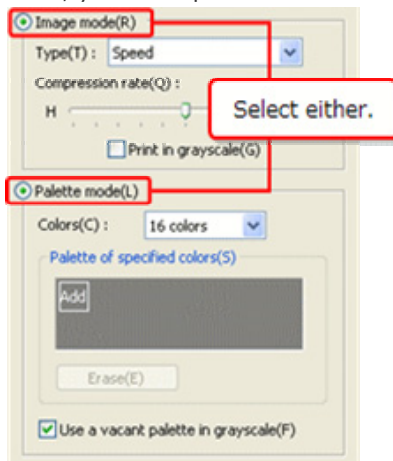


① Select the angle to be outputted, in advance.

In some software programs, the length and width of output image cannot be specified.  
In this case, please specify the rotation angles by **[Angle shift]**.

② Choose the processing mode.

Select the mode to fit the character of image data on the page.  
Then, you can operate the items associated with the selected mode.



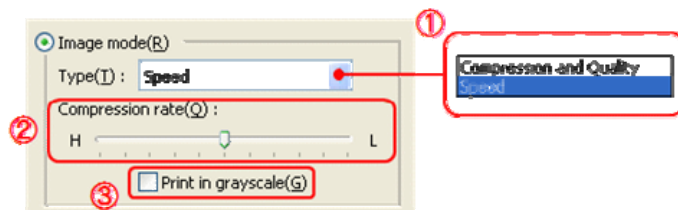
- Image mode

Image mode compresses in full color.  
This mode is suitable for the data such as picture colors that is undesirably reduced.

- Palette mode

Palette mode is an image compress process mode that specifies the color to be used in the image and reduce the color to compress the image.  
This mode is suitable for data with less number of colors used such as design drawing, text, charts, and data.

## ■ If you select the Image mode



① Choose the conversion type.

- **Compression and Quality (Priority on Image quality and Compression)**

Conversion into ITF files of version 2.

Generally, version 2 allows the creation of more-highly compressed ITF files than version 1, although the degree of compression depends on the quality of the original data.

It also converts high-contrasted image data more beautifully.

- **Speed (Priority on Conversion Speed)**

Convert into ITF files of version 1.

A high compression rate tends to cause more block noise, but makes higher the reproducibility of data like low-contrasted graphic data.

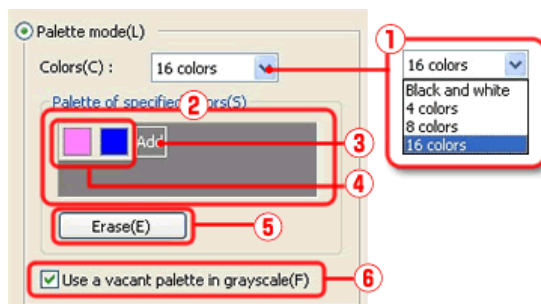
② Specify the compression rate.

The more you move the lug to the left side, the more compressed the data is; the color of image is more reduced.

③ The image is converted to the black-and-white image with 256 shades of gray when you check here.

If the original image has more than 256 colors, you can save more data capacity.

## ■ If you select the Palette mode



① Specify the number of colors to be used in the image.

② The palette displays the colors to be used in the image. (\*)

③ **[Add]** button can add colors to the palette. (\*)

Black and white is colors to be used all the time. They are included in the actual number of colors that you can specify on the **[Colors]**.

④ Color button displays the registered colors in the palette. (\*)

⑤ Delete the palette. (\*)

⑥ When you check here, the palette left is used as the gray scale. (\*)

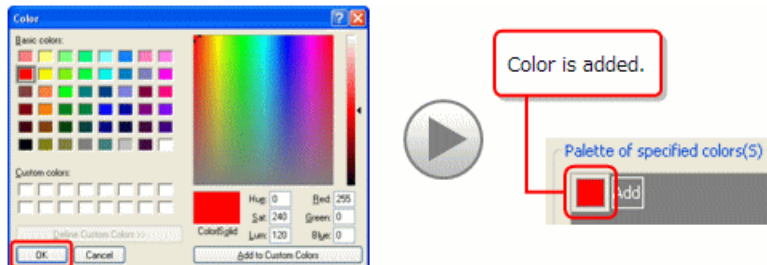
For example, if you register only 4 colors in the palette despite specifying 16 colors, the 12 colors left is used as the gray scale.

\* When you select "Black and white" on **[Colors]**, you cannot use this item.

### ● Add colors to the palette

When you click **[Add]** button, "Color" screen appears.

To add new color to the palette, select the color you want to register and click **[OK]** button on **[Color]**.



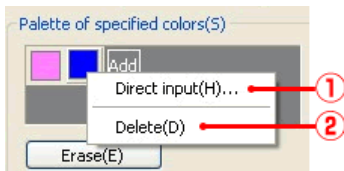
When you right click **[Add]** button, the following pop-up menu appears.

When you select **[Direct input]**, "Colors" screen appears.



### ● Update/Delete colors

When you right click a color button on the palette, this pop-up menu appears.



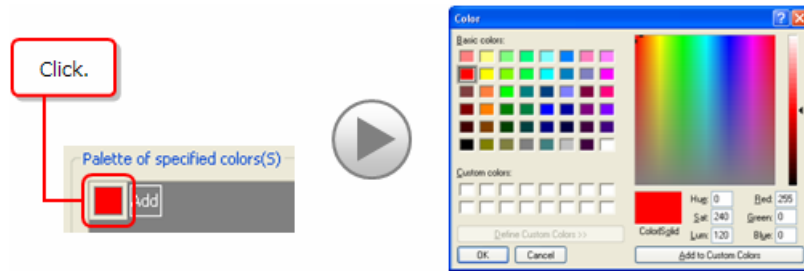
① When you select here, "Color" screen appears.

On "Colors" screen, select the new color and click **[OK]** button.

Then, the selected color is added to the palette.



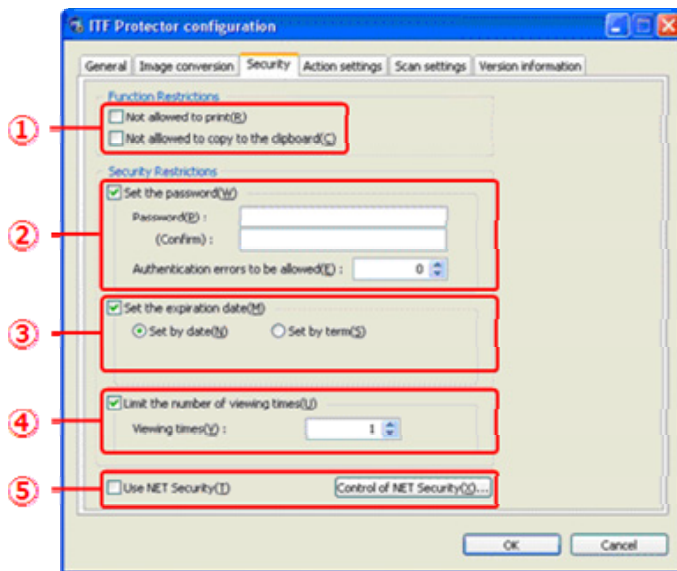
You can call up "Color" screen by clicking the color button.



② When you select here, the selected color is deleted.

## 2 - 4. Configuration - [Security] tab

Please click **[Security]** tab, follow the description, and set each item.



- ① Set the function limits when viewing with ITF Viewer.
  - If you want to ban printing, check **[Not allowed to print]**.
  - If you want to ban copy paste to the other applications, check **[Not allowed to copy the clipboard]**.
- ② If you want to request the password authentication at the time of file viewing, check **[Set the password]**.
  - Please set the password within 6-32 characters.
  - If you want to set limits on the allowed number of password authentication failure, specify the allowed number of times on **[Authentication errors to be allowed]** (0 means no limits).  
File is automatically deleted once authentication failures exceeded the allowable number.
- ③ To set the expiry date of file, check **[Set the expiration date]** and specify the final date of viewing.
  - Files that were expired will be automatically deleted when it was being tried to open.
  - To set the expiry date by date



Choose **[Set by Date]**.

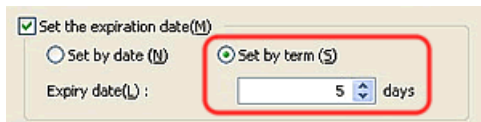
Upon output, **[Set by Date]** is checked and the current date is set in "Date".



A screenshot of a web form. At the top, there is a checked checkbox labeled "Set the expiration date(M)". Below it, there are two radio buttons: "Set by date (N)" which is selected and circled in red, and "Set by term (S)".

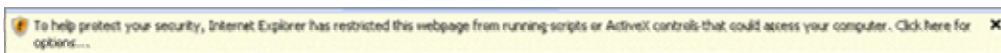
- To set the expiry date by the number of days

Choose **[Set by term]** and type in the number of days in **[Expiry Date]**.



A screenshot of a web form. At the top, there is a checked checkbox labeled "Set the expiration date(M)". Below it, there are two radio buttons: "Set by date (N)" and "Set by term (S)" which is selected and circled in red. Below the radio buttons, there is a label "Expiry date(L) :" followed by a text input field containing the number "5" and a "days" label.

- ④ To set the number of viewing times, check **[limit the number viewing times]**, and specify the number of viewing times.  
If you open a file beyond the number of times specified, the file will be automatically deleted.
- ⑤ Records the security settings on the Web server to make file viewer to protect the security settings more strictly.
  - To make the security settings recorded on the Web server, please check on **[Use Net Security]**.
  - To manage the security settings that are recorded on the Web server, please click **[Control of Net Security]** button.  
Browser will start and displays security management configuration site.



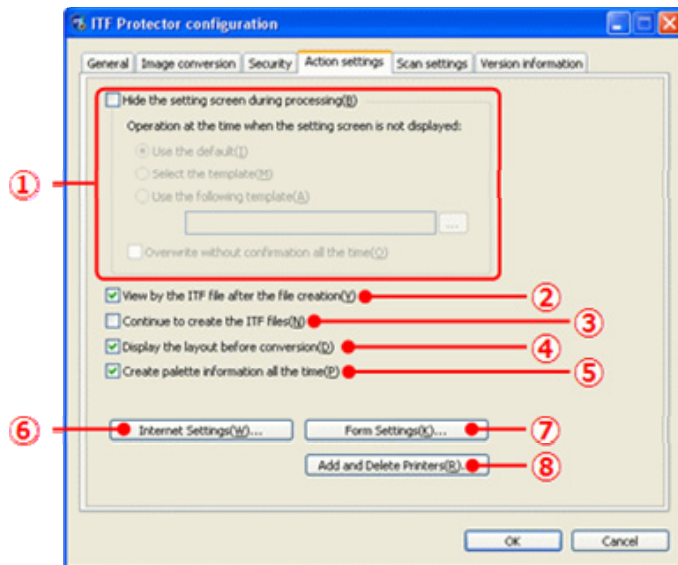
Depending on the browser, you may see a warning message like the one above.

Please continue with the display by responding "permission to view" effect.

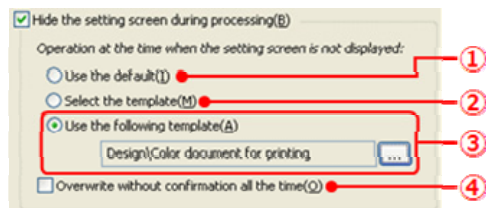
With regard to the use of the security configuration management site, please see **[How to Use This Page]** in this same site, each pate.

## 2 - 5. Configuration - [Action Settings] tab

Please click [Action Settings] tab, follow the description, and set each item.



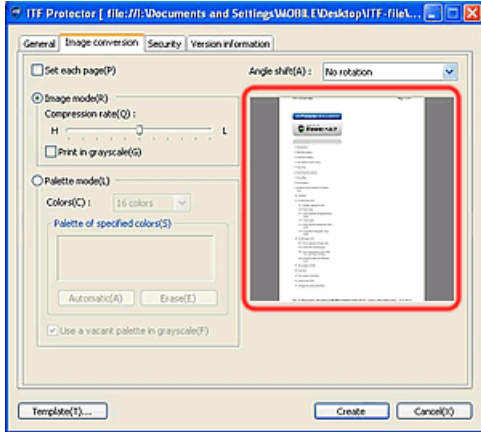
- ① When you select here, the file setting screen is hidden at the time of file creation. You cannot configure the file settings at the time of file creation when you hide it. It is necessary to specify which settings you want to make in order to create the ITF file in advance.



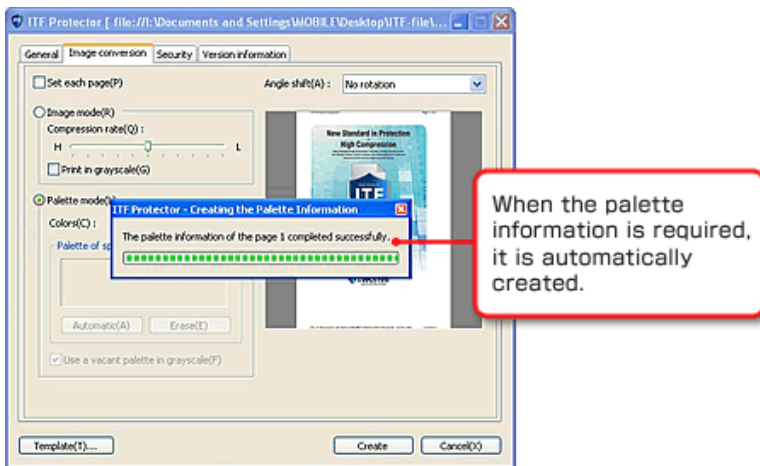
- ① Create files by using the settings specified at the system preference screen.
- ② Display the template selection screen instead of the setting screen, and create a file using the settings from the template you selected.
- ③ You can create a file using the settings of the template that has been specified. When you click [...] button, template selection screen will appear. Please select the template you want to use from the template selection screen.
- ④ While setting screen is a non-display mode, even if the ITF file with the same name is found in the output destination, the created file will always be overwritten without displaying a confirmation message
- ② If you check here, ITF Viewer will start and displays the ITF file when ITF file creation is complete. In addition, ITF file browsed with this setting does not count for the number of ITF file views. Therefore, if you have view limit security setting turned on, the number viewed will not be subtracted from this.

\* Please see the **ITF Viewer help** for ITF Viewer operation method.

- ③ If you check here, ITF file setting screen will not close after ITF file creation is completed, so you can create the ITF file continuously without going over printing again.
- ④ If you check here, Layout (thumbnail), which is in before conversion state, is displayed in the **[Image Conversion]** tab before making the print output.

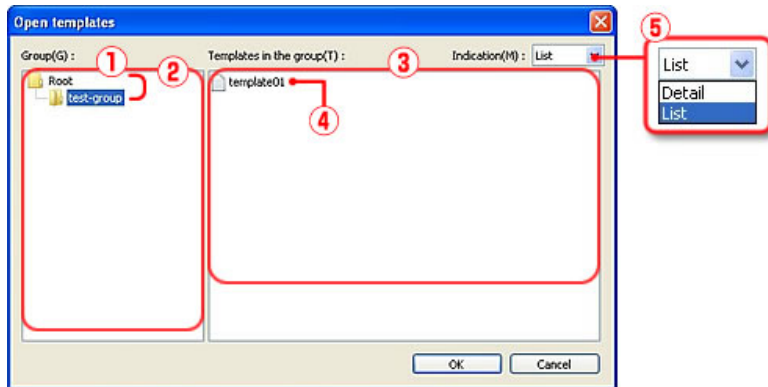


- ⑤ If you check here, it will always make palette information during the first data extraction state, which is needed to convert image in "Palette mode". If you use "Image mode" mainly, you can skip the process of creating palette information by leave off the check to make process faster. In addition, if there is no palette information, if the palette information becomes necessary in case, if you switch to the "Palette mode", it will automatically create only required palette information.



- ⑥ To use ITF protector, internet connection is required. When you want to change the internet connection settings, please click this button. Please see **3. Internet connection environment setting**, for the setup details.
- ⑦ Manage form used in the ITF Protector. Please see **4. Form settings** for the details.
- ⑧ Manage "ITF Printer", a printer for generating ITF file. Please see **5. Add or Remove ITF printer** for the details.

## Template selection screen



- ① Group List: Displays the group that stores the template.
- ② Group: Group is in a hierarchical structure.
- ③ Template List: Shows the list of template that is stored in the group.
- ④ Template.
- ⑤ Change the display format of the template list.

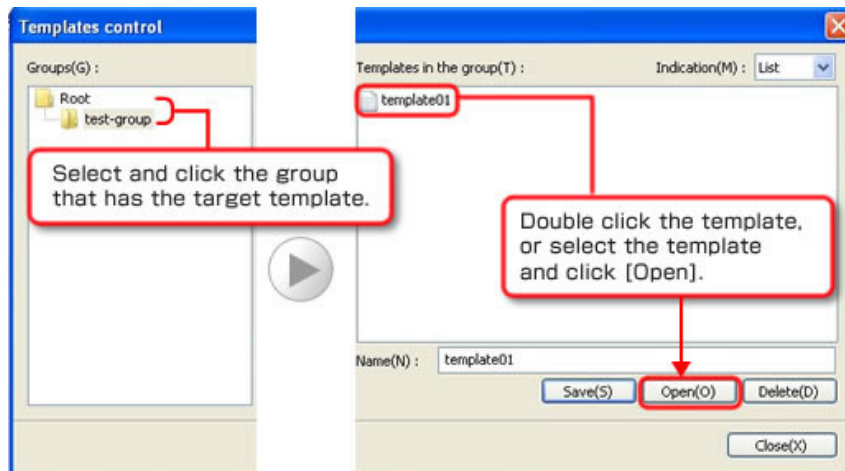


▲List

▲Detail

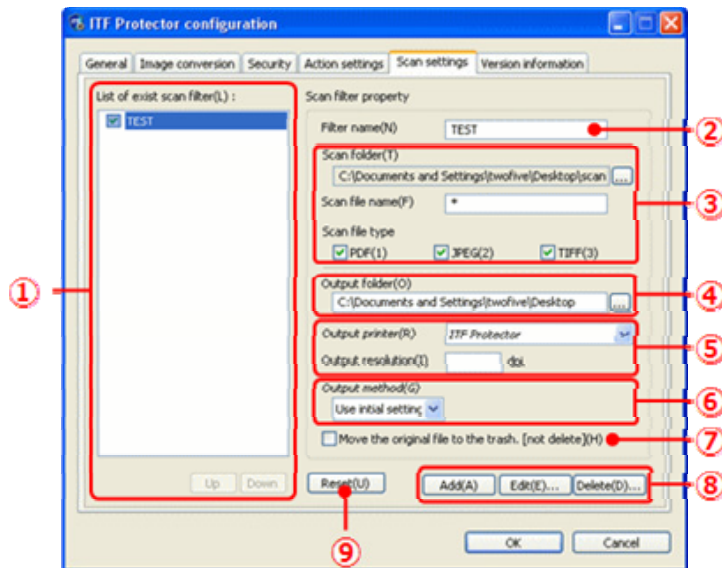
### ● Choose a Template

Select the group which template you want to use is stored, and display the template, and you can either double-click on the desired template, or select it and click **[OK]** button.



## 2 - 6. Configuration - [Scan Settings] tab

Please click **[Scan Settings]** tab, follow the description, and set each item.



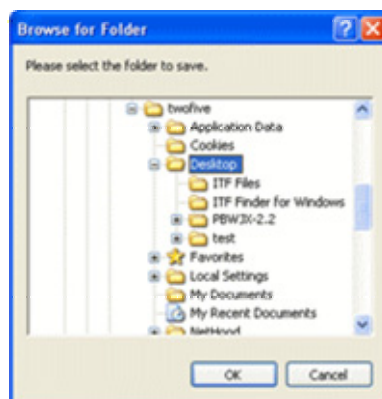
① List of scan filters that is been currently created.  
Scan filter with the check is on, will be continued to be processed with the order of this list.  
The list can be sorted with **[Up]** **[Down]** button.  
In addition, when you select a scan filter, the configuration settings for the selected scan filter will be set in each of the ② - ⑦ in the right.

② The name of the Scan Filter.

③ Set the Scan target folder and search criteria for the file.

### • Scan folder

Please click **[...]** button and specify the folder to be scanned from the "Browse for Folder" below.



- **Scan file name**

Specify the conversion target file name.

For the file name, you are able to use Wildcard (“\*”, “?”), or **Regular expression**.

If you use regular expressions, please enclose the description in the “/”.

Example	Description	The names of the files extracted
ABC*	All files, beginning with “ABC”	ABC, ABCDE, ABC00001, ...
*XYZ	All files, ends with “XYZ”	XYZ, VWXYZ, 00001XYZ, ...
ABC?	File that contains any 1 character and “ABC”	ABCD, ABC1, ...
?XYZ	File that contains any 1 character and “XYZ”	WXYZ, 9XYZ, ...
/^ABC.*\$/	All files, beginning with “ABC”	ABC, ABCDE, ABC00001, ...

- **Scan file type**

Please check the file format you want to convert.

- ④ Specify the output destination of conversion result (ITF file).

Click [...] button and you can select input from the “Browse for Folder” screen.

In addition, if this item has not been input, the output destination setting you have selected in the [Output method](⑥) will be used.

- ⑤ Perform setting regarding conversion.

- **ITF Printer Output**

In case the source file is a PDF file, select the ITF printer to be used for the conversion.

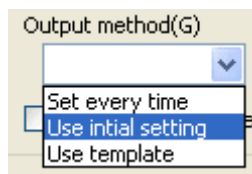
Regarding ITF Printer, please see **5. Add or Remove ITF printer**.

- **Output image resolution**

In case the source file is an image files, such as JPEG, specify the resolution of the image.

If this entry is not been input, source file resolution will be used.

- ⑥ Specify the operation at conversion of ITF Protector.



- **Set every time**

Display the configuration screen each time the conversion process is done.

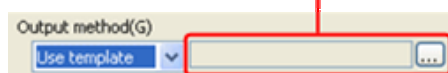
- **Use initial setting**

Perform conversion using the operation settings that was set in the preference screen.

- **Use template**

Perform the conversion using the specified template setting.

If you select “Use template”, appears.

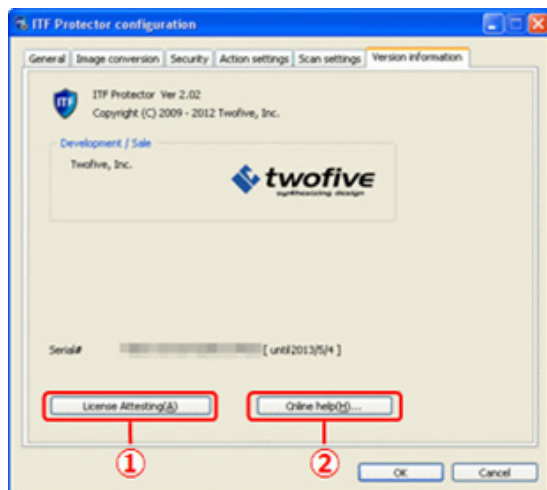


Click on [...] button and select the template you want to use from the template selection screen.

- ⑦ When file conversion is done, the source file will be deleted.  
If you do not want to delete the source file, please check here.  
After conversion, the original file will not be deleted, but instead, it will be moved into the "Trash".  
  
\* If the scan folder is on the network, the source file will be deleted, regardless of this setting.
- ⑧ Please click the **[Add]** button to save the setup contents as new scan folder.  
If you want to update the contents of the scan filter that is selected in the list, please click **[Edit]** button, if you want to delete, click **[Delete]** button.
- ⑨ If you click this button, you can reset the preference edited (Add, Modify, or delete) for scan filter and return to the startup preferences screen state.  
In addition, to apply Scan filter edit, you must click **[OK]** button when exit the Preferences screen.

## 2 - 7. See help - [Version information] tab

Please click **[Version information]** tab.



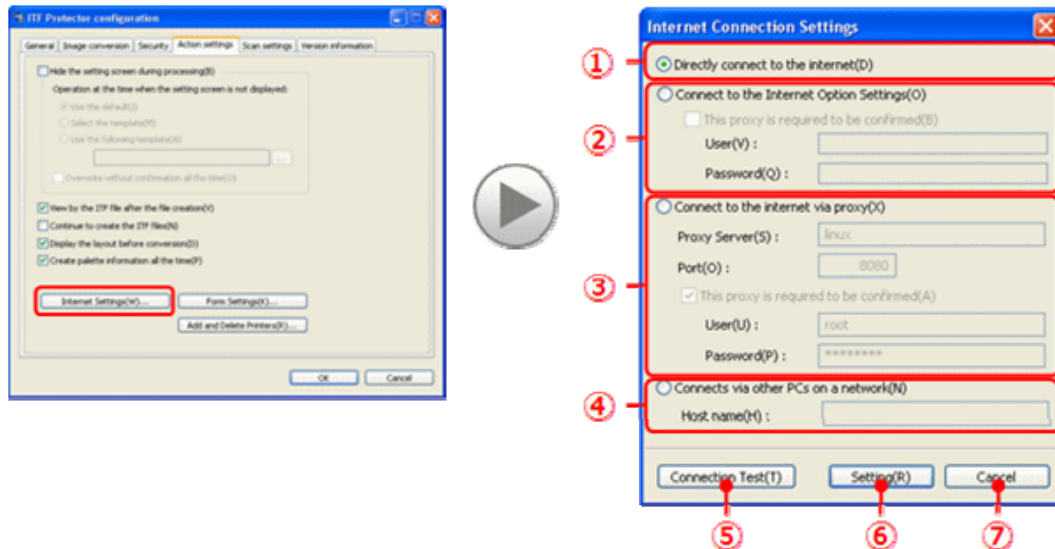
- ① Perform License authentication (Manual Authentication).  
License authentication will be automatically done after 7 days from the date you have authenticated at last, and if authentication cannot be done, you will not be able to create the ITF file.  
When you have to bring the PC outside of an environment that cannot connect to the Internet, such as on business trip; you can manually perform pre-authentication in advance, so you can avoid a situation of letting ITF Protector unusable by activation failure.
  - ② Web browser will be launched and displays the online help of the ITF Protector.
- \* You must be connected to the Internet.

### 3. Internet connection environment setting

If you are connected to the internet through a proxy server, please perform the following settings.

Please click the **[Action Settings]** tab.

When you click the **[Internet Connection Settings]** button, the following screen appears.



- ① If you can connect directly to the Internet, please select this option.
- ② If you want to use the Internet connection settings of Windows, please select there.  
In addition, If the proxy server requires authentication when connecting, please put a check in **[This proxy is required to be confirmed]** and enter your password and user ID.
- ③ If you are connected to the Internet through a proxy server, please select here and enter the proxy name (or IP address), and port number.  
In addition, if the proxy server requires authentication when connecting, please put a check in **[This proxy is required to be confirmed]** and enter your password and user ID.
- ④ If you perform activation through our product's "License Manager", please select here and enter the connection destination PC name or IP address.  
License Manager is a reliable program that carries out on behalf of the operations that requires internet connection for PC that is resides as a service and be connected to the Internet on the network (WAN or LAN), and for PC that is using our licensed products, and is prohibited to connect to the Internet on the network.  
License Manager is available as a free download from "My ITF".
- ⑤ Please click this button when you completed the setting for the required item.  
You can test if you can actually connect to the Internet from the setting on the screen.
- ⑥ Apply / Save the settings and exit this screen.  
Before you click this button, please check the Internet connection by performing connection test.
- ⑦ Do not reflect the setting and exit this screen.

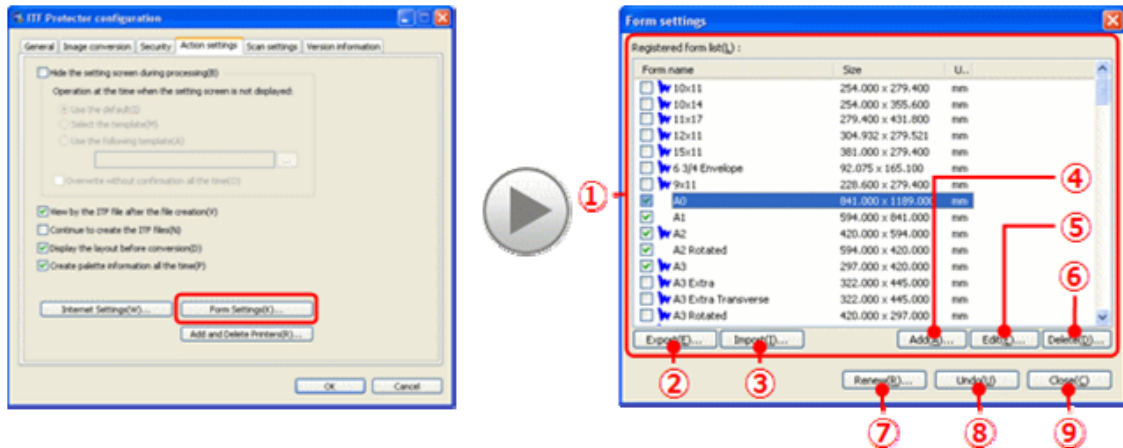


## 4. Form settings

Please perform the following operations to perform settings for the paper that is used in the ITF Protector.

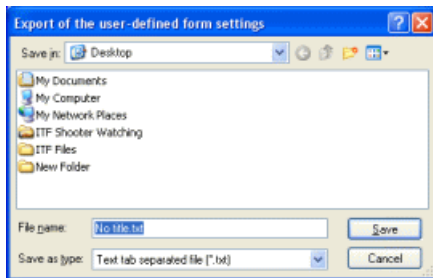
Please click the **[Action Settings]** tab.

When you click the **[Form Settings]** button, the following screen appears.

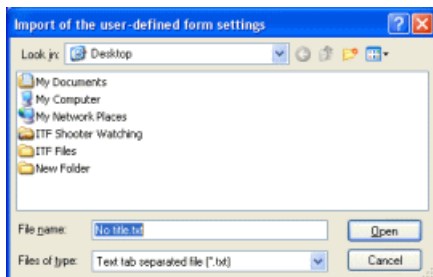


\* This screen does not appear if you have not logged into the Windows as administrator.

- ① Set the paper that is to be used in ITF Protector.  
The paper that is registered on your computer is listed here.  
Please check the paper you want to use in the ITF Protector.
- ② Output the paper information as a tab-delimited file.  
If you click this button, the following screen appears.  
Please enter the file name and click **[Save]** button.



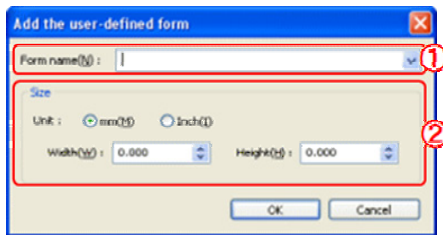
- ③ Take in the paper setting from a tab-delimited file.  
When you click this button, the following screen appears.  
Specify the file to load the setting and click the **[Open]** button.



④ Register the optional paper setting.

When you click this button, the following screen appears.

Set the paper name and the paper size, and click **[OK]** button.



① Enter the paper name you want to add.

When you click , a representative paper name will drop down.

When you select a paper from there, the height and width of the paper you have selected will be set for each item.

\* You cannot register the same paper name that has already been registered

② Set the size of the paper.

Please specify each unit of paper width, and paper height in the following range.

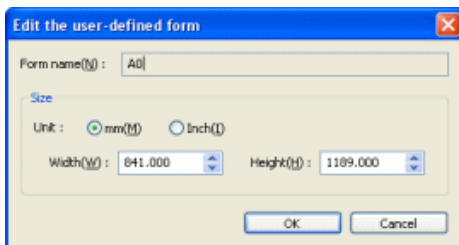
Unit	Value range
mm	10 ~ 1524
Inch	0.394 ~ 60


⑤ Edit the paper setting. (\*)

Please select the paper to be edited from the list and click this button.

Then, the following screen appears.

Please set the new paper size and click the **[OK]** button.



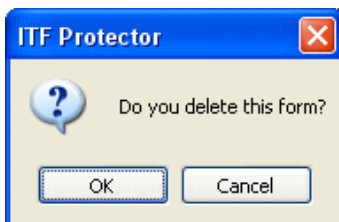
\* Form that has  attached in the list is a paper defined by Windows, so you will not be able to edit this form.


⑥ Delete the paper settings. (\*)

Please select the paper to be edited from the list and click this button.

Then, the following screen appears.

If you reply with **[OK]**, the selected paper setting will be deleted.



\* Form that has  attached in the list is a paper defined by Windows, so you will not be able to delete this form.

- ⑦ To reflect the edited paper settings (add/ change/ delete) on the computer.  
If you click this button, the following message appears.  
When you click **[OK]** to this message, the edits you have done will be reflected.



- ⑧ Cancel edit (add/ modify/ delete) performed for the paper settings.  
If you click this button, the following message appears.  
When you click **[OK]** to this message, the state of the list will return to the state before editing.



- ⑨ Exit this screen.

## 5. Add or Remove ITF printer

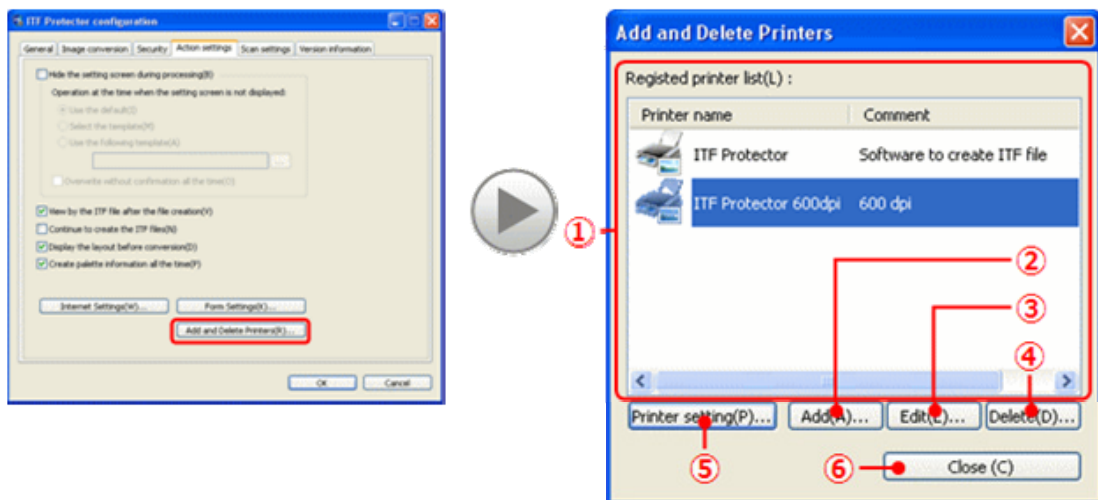
When you install the ITF Protector, "ITF Printer", a printer for generating ITF file, will be registered.

It is possible to register multiple ITF printers, so it is possible to set different resolution outputs for each printer.

Please click the **[Action Settings]** tab.

When you click **[Add and Remove Printers]** button, the following screen appears.

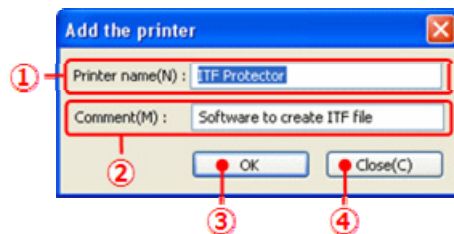
\* This screen does not appear if you have not logged into the Windows as administrator.



① List of ITF Printers that are currently registered.

② Add ITF Printer.

When you click the button, the following screen appears.



① Please enter the printer name that does not overlap with those of existing printer name.

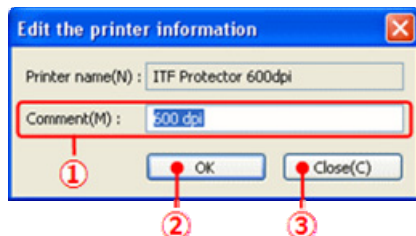
② You can enter optional comments.

③ Perform Add Printer and exit this screen.

④ Cancel ADD Printer, and exit this screen.

③ You can edit the comment of ITF Printer that is been selected in the list.

When you click the button, the following screen appears.



① You can enter optional comments.

② Reflect the change of comment and exit this screen.

③ Cancel changing the comment and exit this screen.

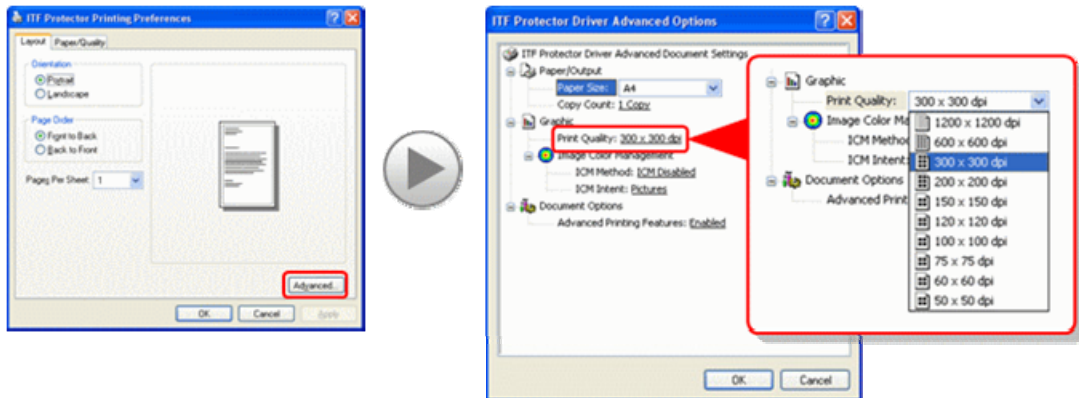
- ④ Remove the ITF Printer that has been selected in the list.  
When you click the button, the following message appears.  
If you want to continue with the deletion, please click **[OK]** button.



\* You cannot delete "ITF Protector" Printer.

- ⑤ Show the print settings screen of ITF printer that has been selected in the list.  
When you click the button, the following screen appears.  
In this screen, you can change the printer's default resolution during ITF file creation.

(Ex) How to change the default resolution



Please click the **[Print Quality]**, select any resolution, and click **[OK]** button.

- ⑥ Exit this screen.

## 6. Create ITF file

In ITF Protector, there is a variety of ways to create the ITF files.

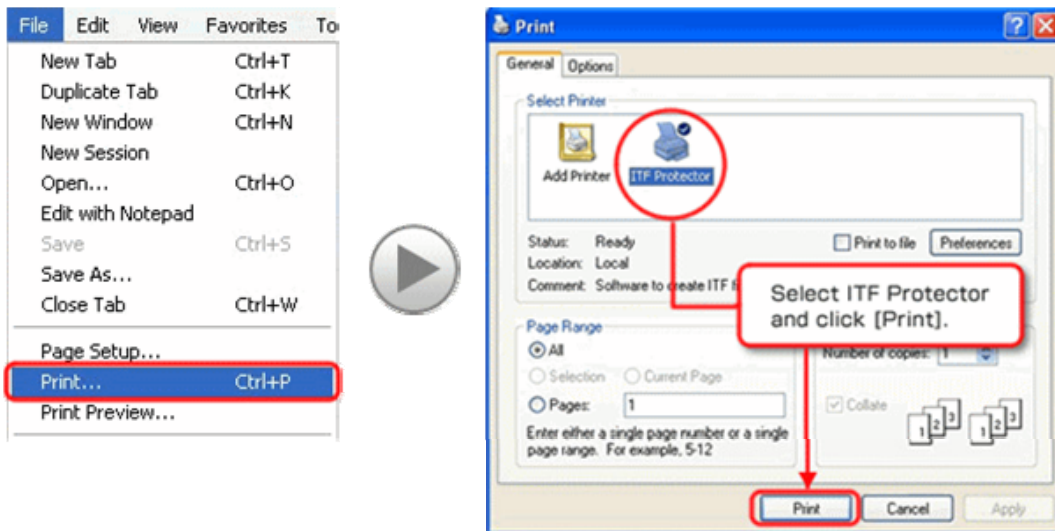
### 6 - 1. Create ITF file from ITF printer

Operation of ITF Protector works as a conjunction with the print function of application that has the print function.

To create the ITF file, please run application's print command (that is able to select the printer you want to use), and select the ITF printer from the list of printers.

Regarding ITF Printer, please see **5. Add or Remove ITF printer**.

(Ex.) For Microsoft Internet Explorer



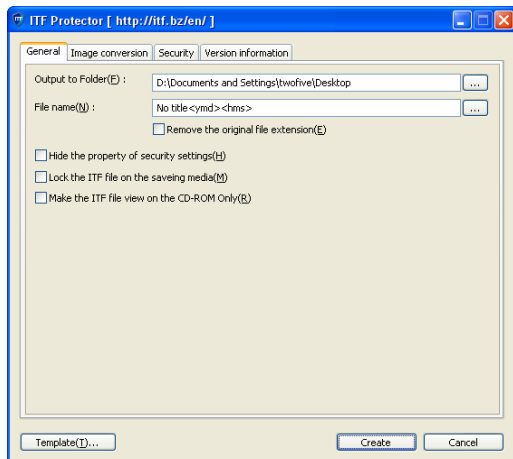
When you click [**Print**] button, the following screen appears.

Here, ITF is extracting the required data to generate ITF file.

If you want to stop the process, please click [**Cancel**] button.



When the data extracting process is complete, the following file setting screen appears.



\* If you have set [Hide the setting screen during processing] on  
2 - 5. Configuration - [Action Settings] tab, this screen does not appear.

## 6 - 2. Create the ITF file without opening the file

Image files such as JPEG files, or Document files such as Microsoft Word; can create ITF file without using [Print] command in the program after opening the program.

Please right click on the original file, and select [Convert to ITF file] from the pop-up menu.

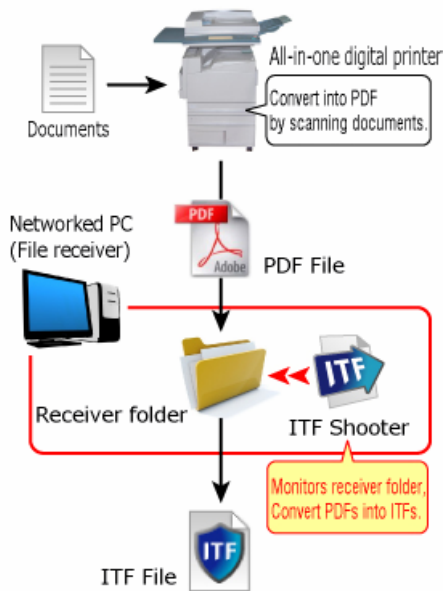


### 6 - 3. Create ITF File from Image Scanner

You can create ITF file from TIFF files, PDF files, or JPEG files, that was transferred from the image scanner function, such as a digital Multifunction Printer.

If you specify a data transfer destination folder of image scanner to the ITF protector's scan filter, the data captured by the scanner will automatically converted to the ITF file.

Regarding scan filter, please see **2 - 6. Configuration - [Scan Settings] tab.**



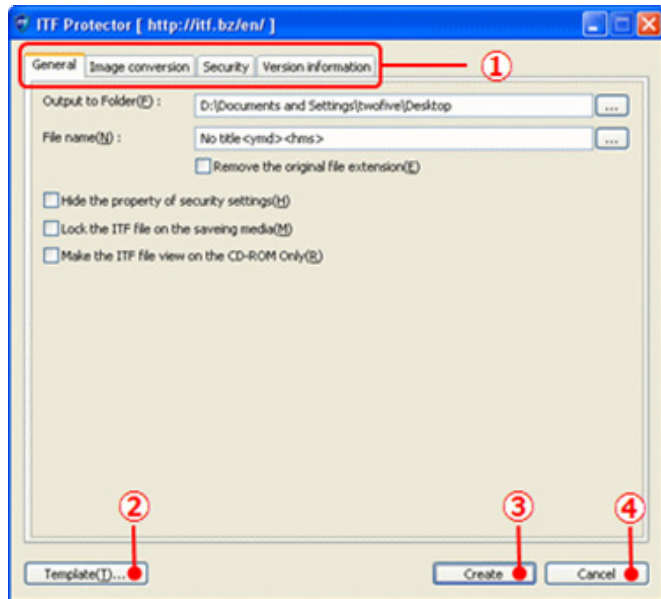
\* While preference screen is running, the scan filter function will stop.



## 6 - 4. ITF file setting screen

When the extraction of data is complete, the following screen appears.

On this screen, you can make various settings for the ITF file that you will create.



① All settings are classified in each category.

If you click one of the tabs, the items corresponding to the tab will switch to the setting page.

- **[General]** tab

This tab makes the settings for the location to create files and the name of file.

(Please see **6 - 5. ITF file setting - [General] tab.**)

- **[Image conversion]** tab

This tab configures the settings for the image processing within data.

(Please see **6 - 6. ITF file setting - [Image conversion] tab.**)

- **[Security]** tab

This tab configures the settings for the security of file.

(Please see **6 - 7. ITF file setting - [Security] tab.**)

- **[Version Information]** tab

This tab displays the product information about ITF Protector.

(Please see **6 - 8. See help - [Version information] tab.**)

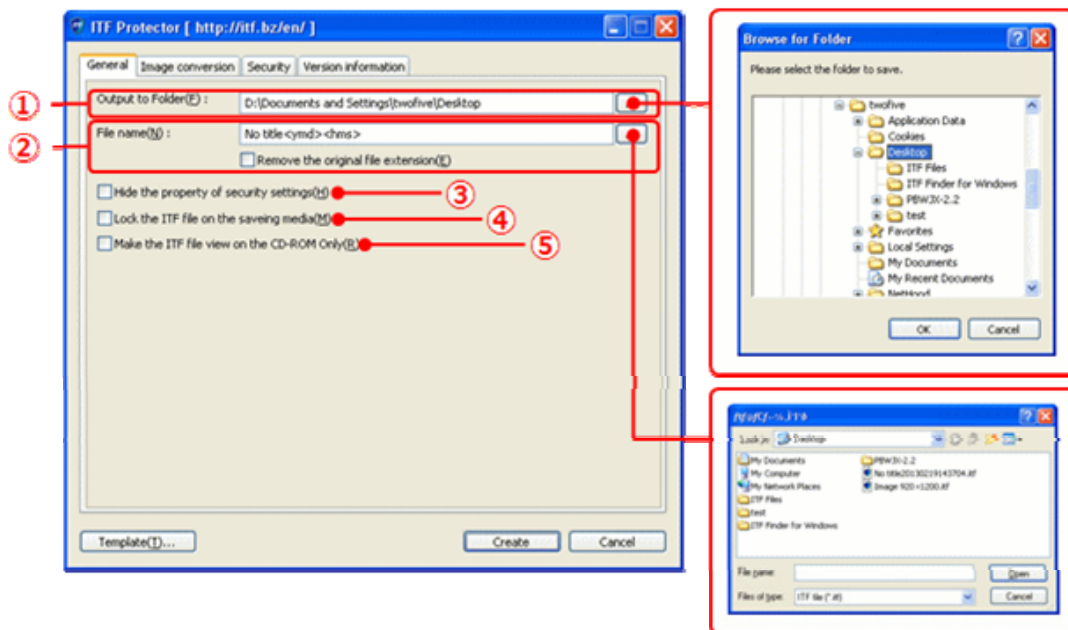
② Display the control screen of templates.

③ Click here to start ITF file creation.

④ Cancel the file creation, and close ITF Protector.

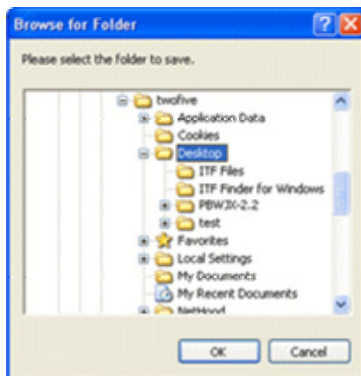
## 6 - 5. ITF file setting - [General] tab

Please click **[General]** tab, follow the description, and set each item.



① Specify the destination for ITF file.

You can also click the [...] button to select and input from the "Browse for Folder" screen.



② This function optionally specifies the name of the ITF file.

You can use automatic replacement of the file name with using the following character string.

- <ymd>

It will be replaced by the creation date of the file (year, month, and day).

- <hms>

It will be replaced by the creation time of the file (hour, minute, and second).

- <doc>

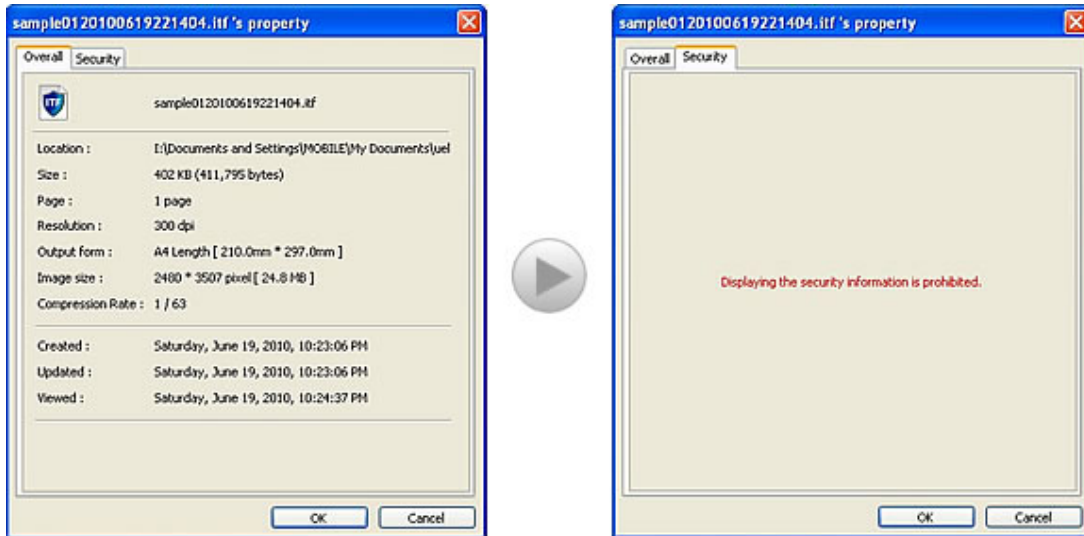
It will be replaced by the document name of the original data.

If you check **[Remove the original file extension]**, it will replace with extension removed state.

E.G. if you enter "ABC<ymd>DEF", translated into "ABC20100115DEF".

(If it is made on January 15, 2010.)

- ③ If you check this area while creating ITF file, the configuration information about the security will not be published as below when you browse it with the ITF Viewer.



- ④ If you check this area while creating ITF file, you will not be able to browse it outside of the destination media (USB memory or Hard disk) you specified when you created the file.



\* You cannot use this function as conjunction with the below feature,  
**[Make the ITF file view on the CD-ROM only].**

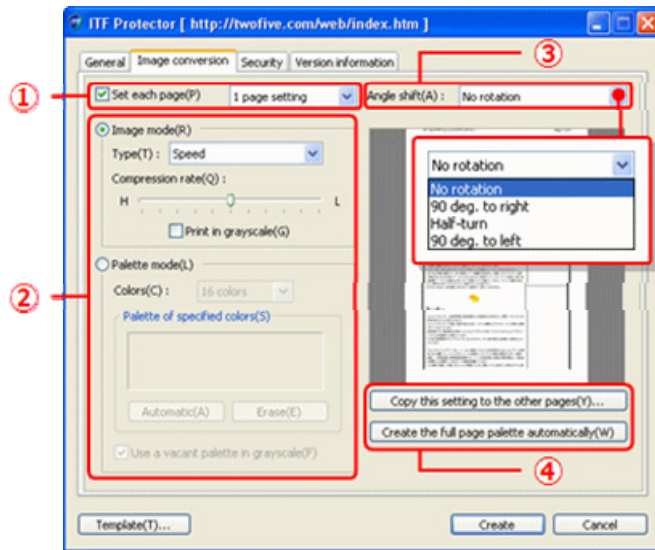
- ⑤ If you check this area while creating ITF file, you will not be able to browse if the file is not in the state that has been recorded in the CD-R/RW or DVD-R/RW.



\* For this feature, it is required to combine with Net security to perform.  
 (Please refer to the **6 - 7. ITF file setting - [Security] tab.**)

## 6 - 6. ITF file setting - [Image conversion] tab

Please click **[Image conversion]** tab, follow the description, and set each item.



### ① Select the pages you want to setup

To perform the setting to another page, please check **[Setting for each page]**.

The page setting operation items for each page is additionally displayed.

If you want to use the same settings to all pages, please remove this check.



When you click here,  
additional button appears  
as shown on the right.

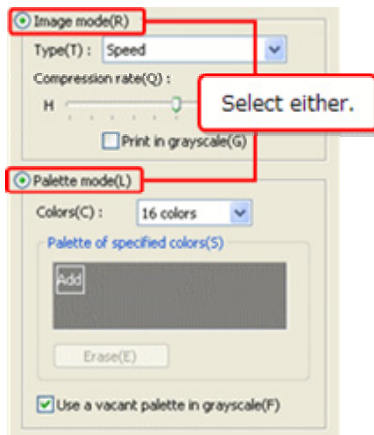
Select the processing page.

② Choose the processing mode.

Select the mode to fit the character of image data on the page.

Then, you can operate the items associated with the selected mode.

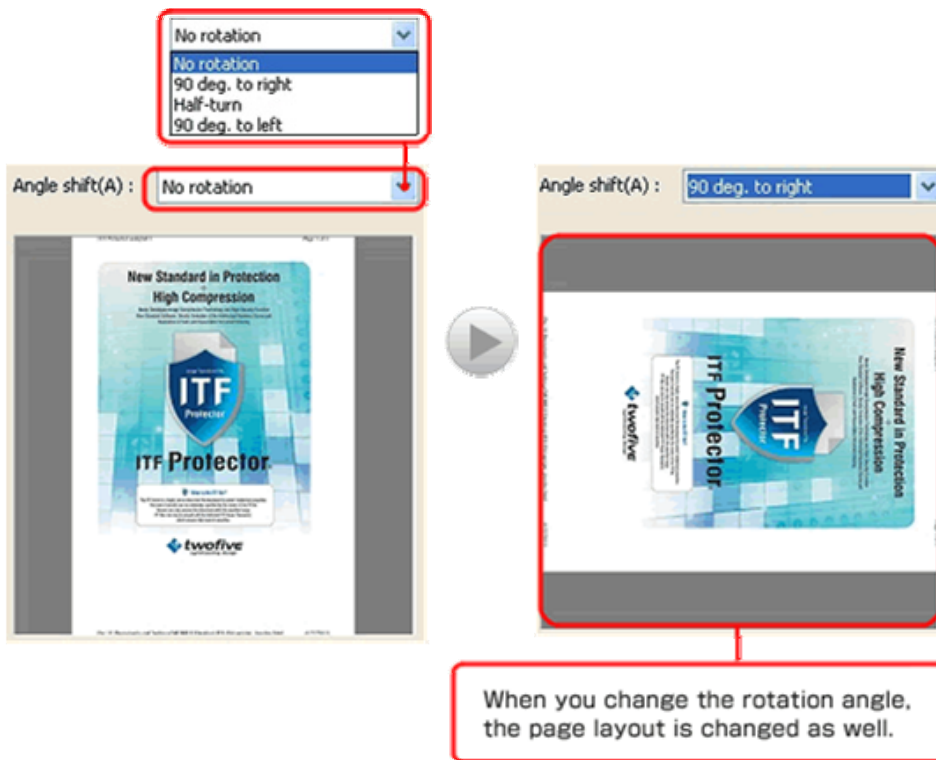
Please see **About processing mode setting** for setting method of each mode.



③ Select the angle to be outputted, in advance.

In some software programs, the length and width of output image cannot be specified.

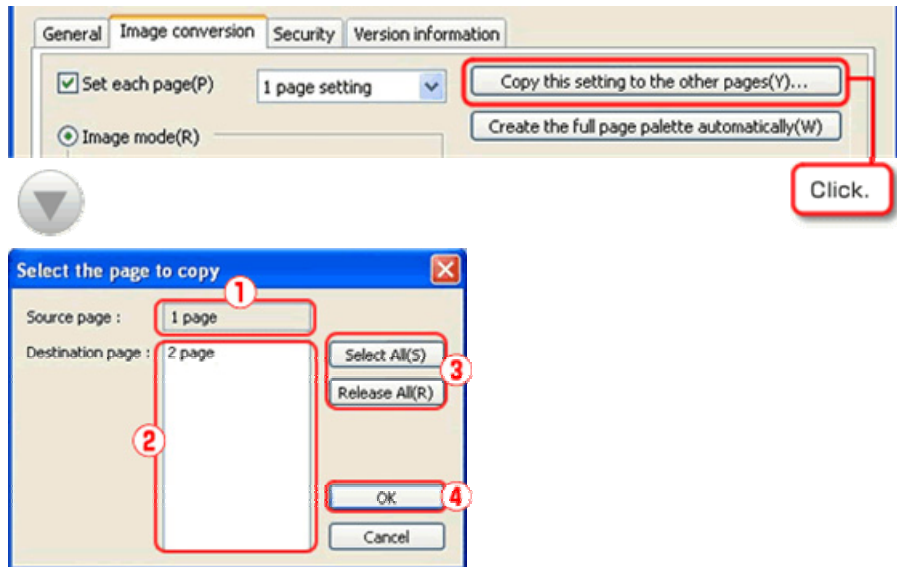
In this case, please specify the rotation angles by **[Angle shift]**.



④ Auxiliary operation of the page setting

- To copy a setting to another page

When you click [**Copy this setting to the other pages**] button, following screen appears. On this screen, you can copy the page setting that is currently displayed to another page.



① Copy source page.

② Copy destination page.

Every time you click, the state will switch to selection and non selection. You can select multiple pages.

③ When you click [**Select All**] button, you will be able to select all copy destination pages.

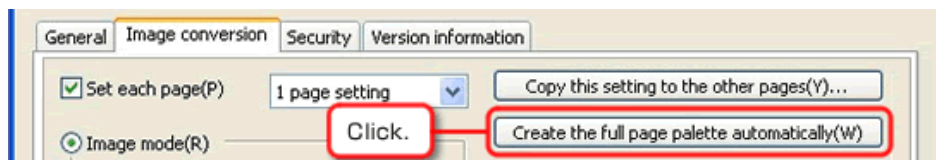
When you click [**Release All**] button, the copy destination pages will become non-selected state.

④ Perform the copy and close this window.

- Automatically create all page palettes at once

When you click the [**Create the full page palette automatically**] button,

It will automatically register the palette of each page by extracting frequently used color from individual pages.

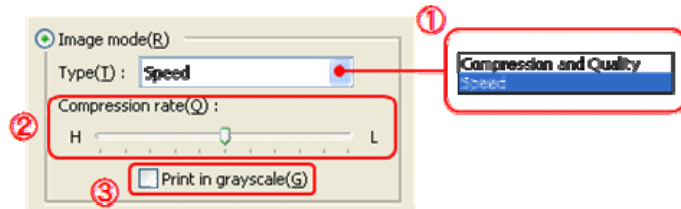


## About processing mode setting

- Image mode

Image mode compresses in full color.

This mode is suitable for data which is not preferable for reducing color such as photos.



① Choose the conversion type.

- Compression and Quality (Priority on Image quality and Compression)**

Conversion into ITF files of version 2.

Generally, version 2 allows the creation of more-highly compressed ITF files than version 1, although the degree of compression depends on the quality of the original data.

It also converts high-contrasted image data more beautifully.

- Speed (Priority on Conversion Speed)**

Convert into ITF files of version 1.

A high compression rate tends to cause more block noise, but makes higher the reproducibility of data like low-contrasted graphic data.

② Specify the compression rate.

The more you move the lug to the left side, the more compressed the data is; the color of image is more reduced.

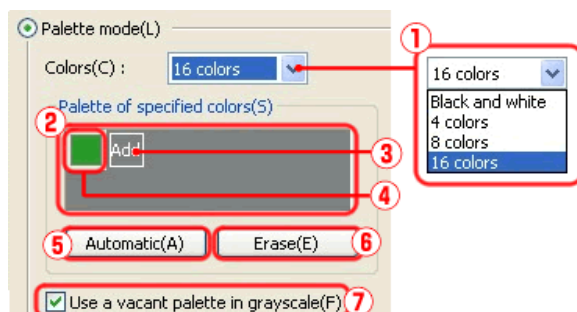
③ The image is converted to the black-and-white image with 256 shades of gray when you check here.

If the original image has more than 256 colors, you can save more data capacity.

- Palette mode

Palette mode is an image compress process mode that specifies the color used in the image and reduce the color to compress the image.

This mode is suitable for data that uses less number of colors such as design drawing, text, charts, and data.



① Specify the number of colors to be used in the image.

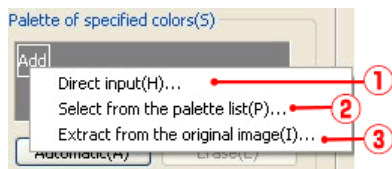
② The palette displays the colors to be used in the image. (\*)

- ③ **[Add]** button can add colors to the palette. (\*)  
Black and white is colors to be used all the time. They are included in the actual number of colors that you can specify on the **[Colors]**.
- ④ Color button displays the registered colors in the palette. (\*)
- ⑤ Extract the colors used frequently, and automatically register them on the palette. (\*)
- ⑥ Delete the palette. (\*)
- ⑦ When you check here, the palette left is used as the gray scale. (\*)  
For example, if you register only 4 colors in the palette despite specifying 16 colors, the 12 colors left is used as the gray scale.

\* When you select "Black and white" on **[Colors]**, you cannot use this item.

● **Add colors to the palette**

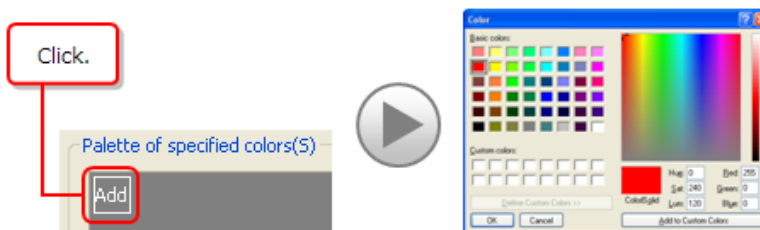
When you click the add button, the below pop-up menu will appear.



- ① When you click this, "Color" screen will be displayed.  
Select the color you want to register on the "Color" screen, and click the **[OK]** button, then the color will be added to the palette.



You can call out "Color" screen by clicking on below button.

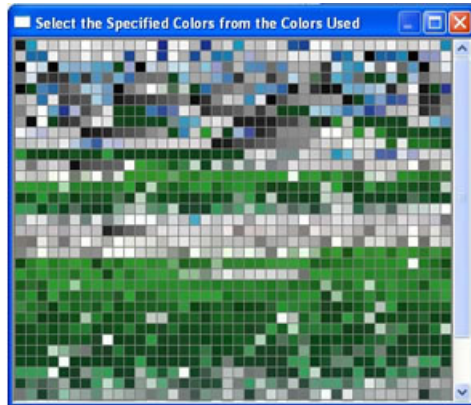




② If you select this, the following screen appears.

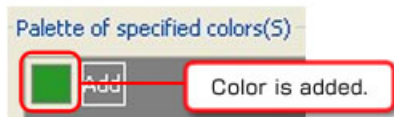
In this screen, the color that is used in the page(\*) you are currently processing will be listed.

When you double-click the color you want to register from here, the color will be added to the palette.



When you press the following keys on the keyboard, colors can be sorted.

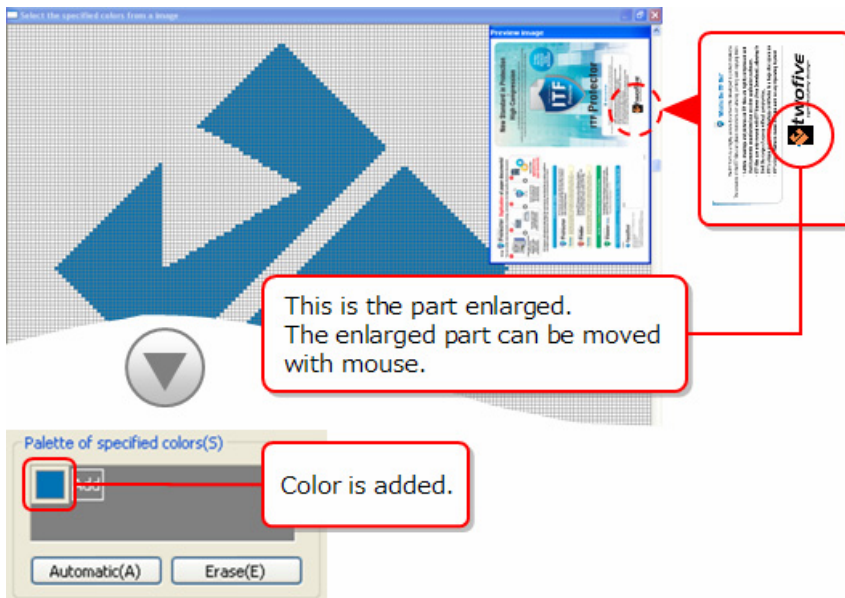
- [C]...Order of frequency in use
- [H]...Order of color tone
- [L]...Order of brightness
- [S]...Order of clearness
- [R]...Order of red elements used
- [G]...Order of green elements used
- [B]...Order of blue elements used



③ If you select this, the following screen appears.

This screen will enlarge the currently processing page(\*) display.

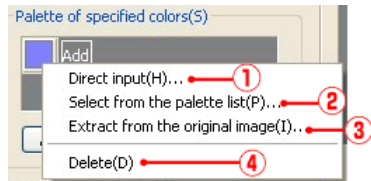
When you double-click the color you want to register from here, the color will be added to the palette.



\* The first-page information appears when you apply the same settings to all pages.  
(Please see 6 - 6. ITF file setting - [Image conversion] tab.)

## ● Update/Delete colors

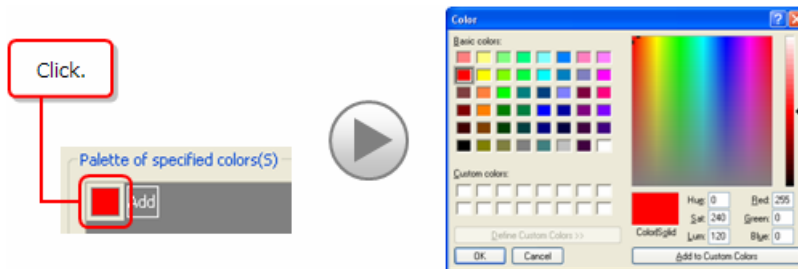
When you right click a color button on the palette, this pop-up menu appears.



- ① When you select here, **[Colors]** screen appears.  
On “Colors” screen, select the new color and click **[OK]** button.  
Then, the selected color is added to the palette.



You can call up “Color” screen by clicking the color button.

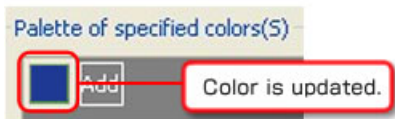


- ② If you select this, the following screen appears.  
In this screen, the color that is used in the page(\*) you are currently processing will be listed.  
When you double-click the new color from here, the color of the color button that you have edited will be updated.

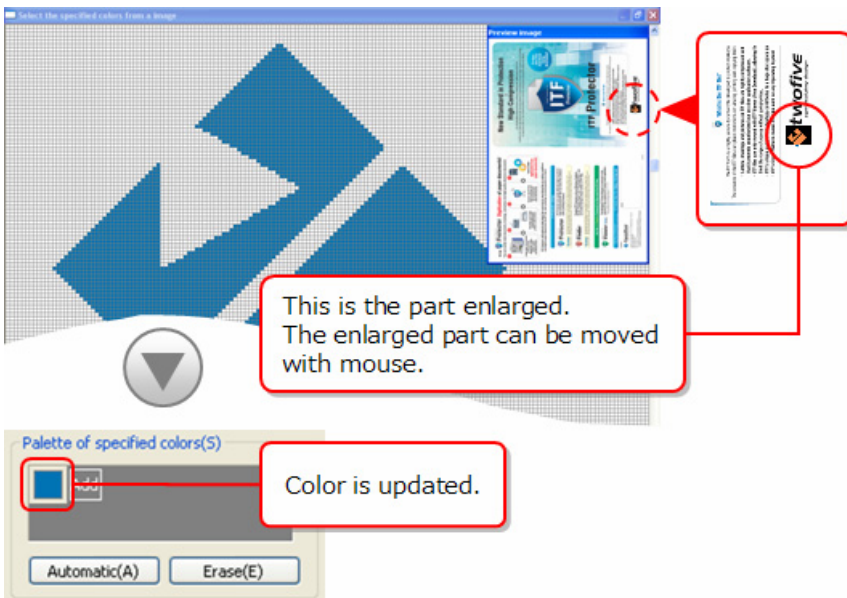


When you press the following keys on the keyboard, colors can be sorted.

- [C]...Order of frequency in use
- [H]...Order of color tone
- [L]...Order of brightness
- [S]...Order of clearness
- [R]...Order of red elements used
- [G]...Order of green elements used
- [B]...Order of blue elements used



- ③ If you select this, the following screen appears.  
 This screen will enlarge the currently processing page(\*) display.  
 When you double-click the new color from here, the color of the color button that you have edited will be updated.

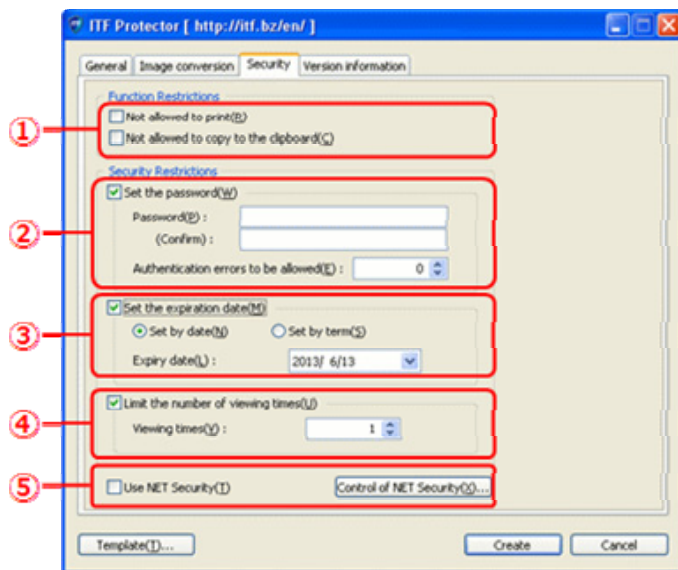


- ④ When you choose this, the selected color button is deleted

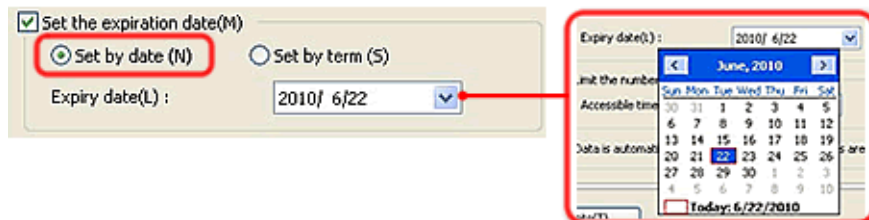
\* The first-page information appears when you apply the same settings to all pages.  
 (Please see 6 - 6. ITF file setting - [Image conversion] tab.)

## 6 - 7. ITF file setting - [Security] tab

Please click **[Security]** tab, follow the description, and set each item.

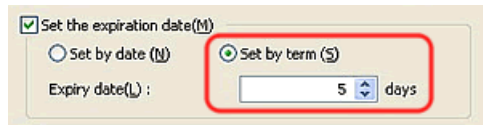


- ① Set the function limits when viewing with ITF Viewer.
  - If you want to ban printing, check **[Not allowed to print]**.
  - If you want to ban copy paste to the other applications, check **[Not allowed to copy the clipboard]**.
- ② If you want to request the password authentication at the time of file viewing, check **[Set the password]**.
  - Please set the password within 6-32 characters.
  - If you want to set limits on the allowed number of password authentication failure, specify the allowed number of times on **[Authentication errors to be allowed]** (0 means no limits).  
File is automatically deleted once authentication failures exceeded the allowable number.
- ③ To set the expiry date of file, check **[Set the expiration date]** and specify the final date of viewing.  
Files that were expired will be automatically deleted when it was being tried to open.
  - To set the expiry date by date  
If you specify the expiration limit by date, select **[Set by date]**.



- To set the expiry date by the number of days

Choose **[Set by term]** and type in the number of days in **[Expiry Date]**.



- ④ To set the number of viewing times, check **[limit the number viewing times]**, and specify the number of viewing times.  
If you open a file beyond the number of times specified, the file will be automatically deleted.
- ⑤ Records the security settings on the Web server to make file viewer to protect the security settings more strictly.
  - To make the security settings recorded on the Web server, please check on **[Use Net Security]**.
  - To manage the security settings that are recorded on the Web server, please click **[Control of Net Security]** button.  
Browser will start and displays security management configuration site.



Depending on the browser, you may see a warning message like the one above.  
Please continue with the display by responding "permission to view" effect.

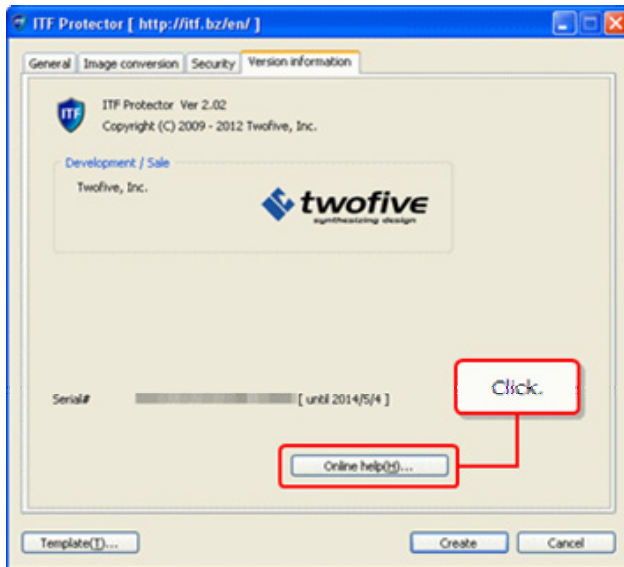
With regard to the use of the security configuration management site,  
please see **[How to Use This Page]** in this same site, each page.

## 6 - 8. See help - [Version Information] tab

Please click [Version information] tab.

When you click [Online help] button, web browser will be launched and displays the online help of the ITF Protector.

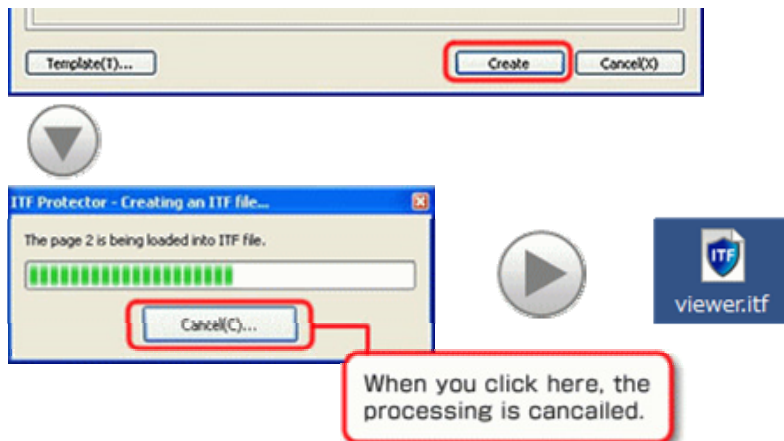
\* You must be connected to the Internet.



## 6 - 9. Perform output of the ITF File

When you complete all settings, click [Create] button.

ITF file creation process will start.



If you checked [View by the ITF file after the file creation], you can check the contents of the file after the creation.

For setting method, please see 2 - 5. Configuration - [Action Settings] tab.

\* Confirmation screen is not included in the views.

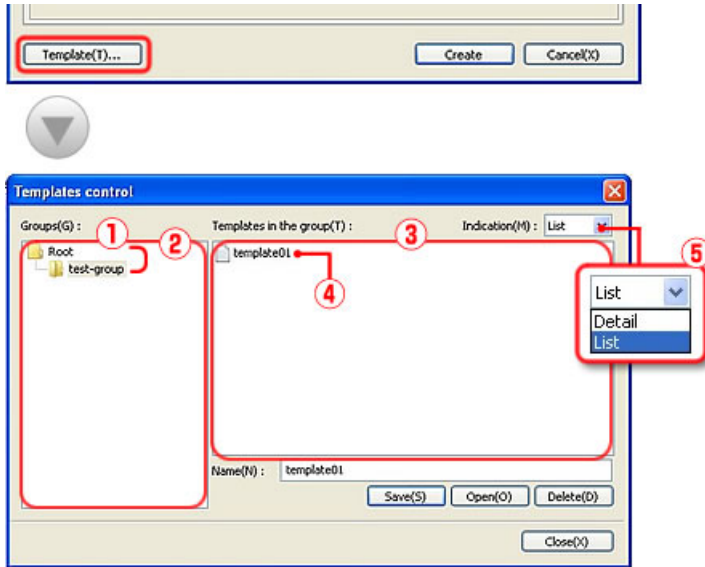
## 7. Make the template of the file creation setting

You can save ITF creation setting as template.  
The templates can be management by groups.

### 7 - 1. Template management screen

When you click [**Template**] button at the bottom part of file setting screen, this following screen appears.

On this screen, you can control the templates.



- ① Group List: Displays the group that stores the template.
- ② Group: Group is in a hierarchical structure.
- ③ Template List: Shows the list of template that is stored in the group.
- ④ Template.
- ⑤ Change the display format of the template list.



▲List

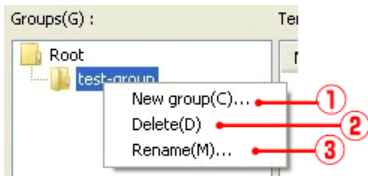


▲Detail

## 7 - 2. Edit groups

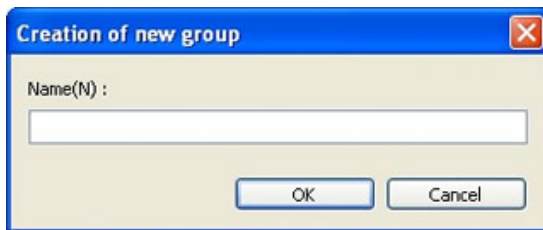
You can organize the template by making the group.

If you right-click the group you want to edit, the pop-up menu appears.



- ① When you click this item, the following screen appears.

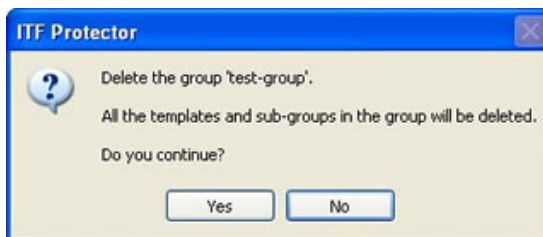
Enter the name of the group you want to add and click **[OK]** button, then the sub-group will be added to the group you have operated.



- ② When you click this item, the following message appears.

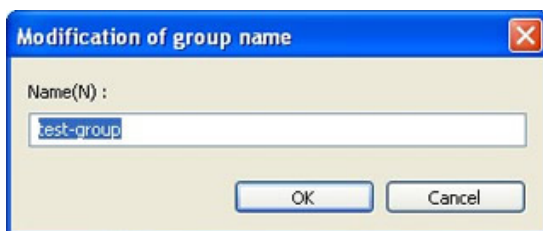
If you respond with **[YES]** to the message, the group will be deleted.

In addition, if you are to delete the template in the group, the template in the sub-group will also be deleted, so please be aware.



- ③ When you click this item, the following screen appears.

When you enter the new group name and click **[OK]** button, the name of the group you have been operating will change.

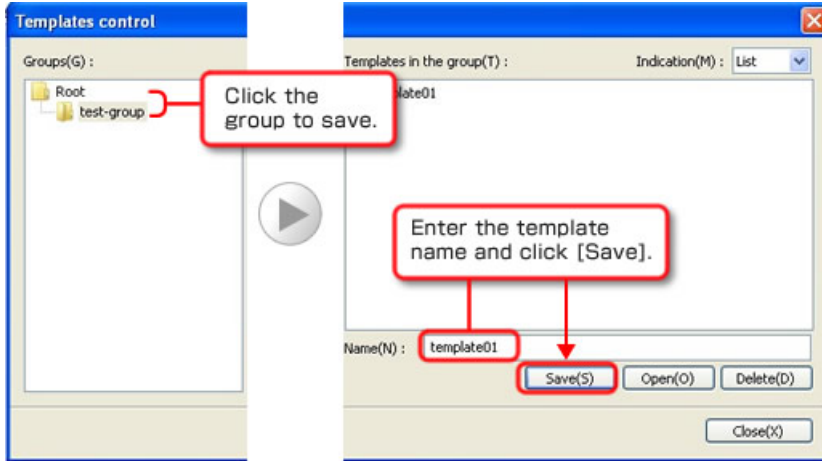


\* You cannot change the name or delete the root.



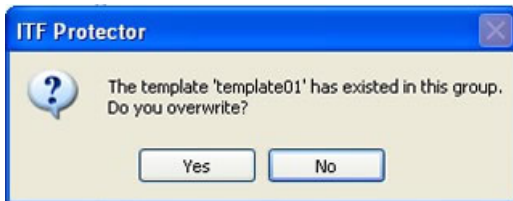
### 7 - 3. Save templates

Save the settings that you have created in the file setting screen as a template.  
Select the group which you want to save the template; enter the template name, and click **[Save]** button.



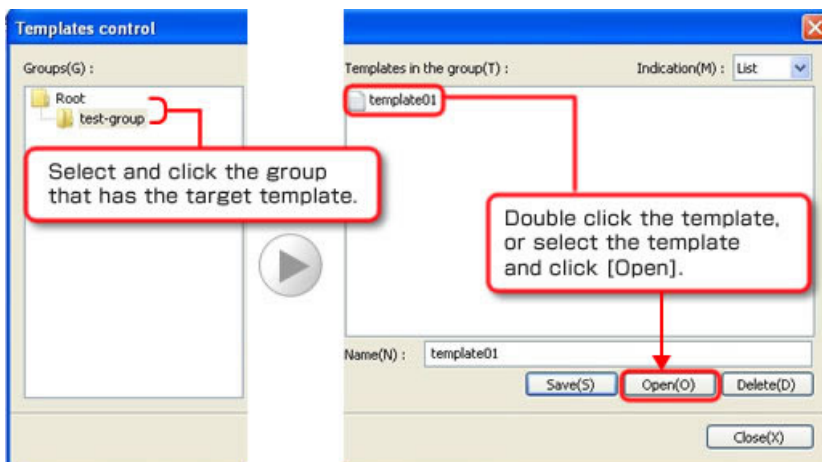
If the template with the same name already exists in a destination group, the following message appears.

If you respond with **[Yes]**, you can replace with a new template.



### 7 - 4. Use the template

Call out the settings from the template and develop it to the file settings screen.  
Select the groups which stored the template you want to use; display the template, and perform either double-click on the desired template or select and click **[Open]** button.



## 7 - 5. Edit the Template

You can change the name or move between groups of a previously created template.

In advance, please select the group that has the edited template stored, and display the desired template.

- **Change the name of template**

If you right-click the template, the pop-up menu appears.

Select **[Rename]** from the menu.

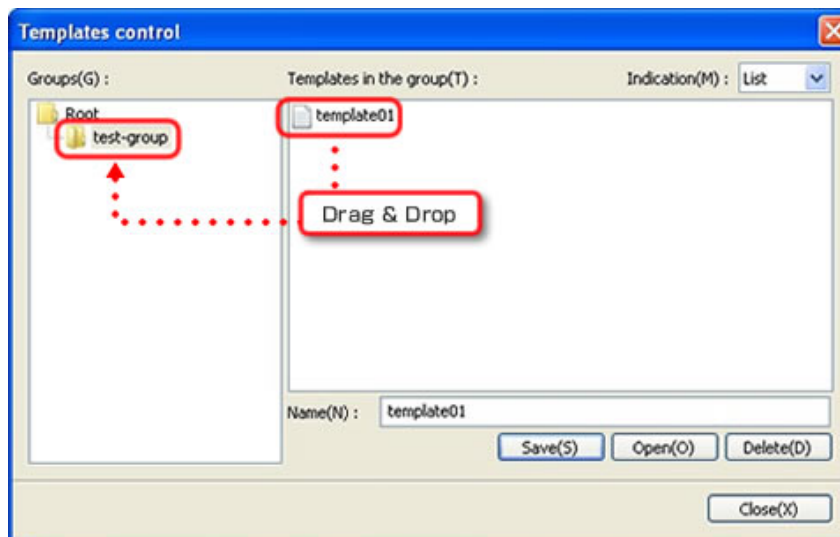
“Modification of Template name” screen appears.

Enter the new name and click **[OK]** button, and the template name will be changed.



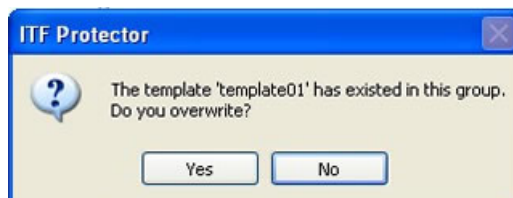
- **Move the template to another group**

Please drag the template that you want to move and drop to a group that you want to put.



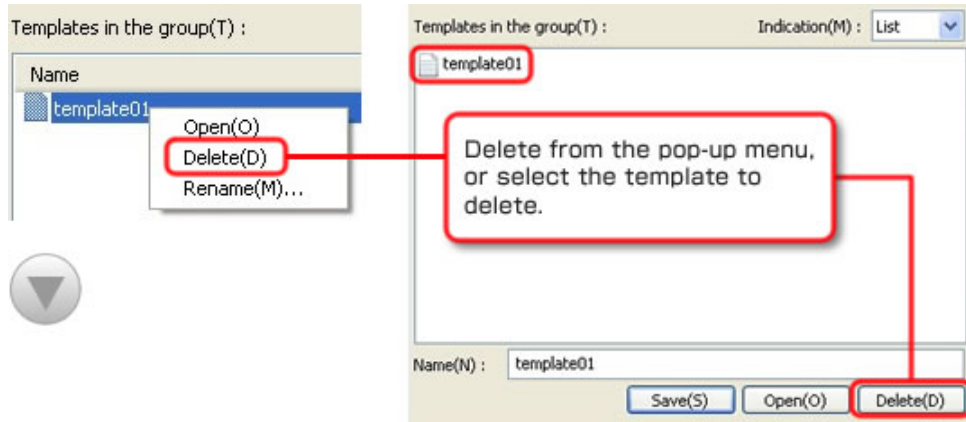
If there is a template of the same name in the destination group, the following message appears.

When you select **[Yes]**, the original template is overwritten.



- **Delete the template**

Please right click the template and select a **[Delete]** from the pop-up menu, or select template and click the **[Delete]** button.



Confirmation on the following will be displayed.

Please respond **[Yes]** to continue with the deletion.

