

1. Introduction

1 - 1. About the ITF Viewer

"ITF Viewer" is an application that is dedicated to view files that have been saved in ITF format. ITF format is a high security document file that was developed to protect the intellectual property rights.

The strength of the security can be specified unilaterally by the creator of the ITF file, so the viewers cannot handle ITF documents outside of the range specified.

In addition, only "ITF Viewer" can browse ITF file format so it made it possible to maintain even high security.

1 - 2. Operating Environment

■ Supported OS

Windows XP, Windows 2003/2008 Server, Windows Vista, Windows 7, Windows 7 64bit

■ Memory

512MB or more recommended.

■ Empty disk space

5MB or more recommended.

* It needs work space separately.

It will be affected by the paper size, resolution, and amount of pages.

■ Other

- Internet connection is required for the following situation.
 1. When viewing the ITF file that has time-limit, or using the Net security.
 2. When viewing Help (This document).
- Speed of conversion and browsing ITF is greatly influenced by the CPU and memory. If you would like to make operations faster, please upgrade these performances.
- During ITF browse, working capacity equivalent to the pre-compression is needed temporarily.

When browsing a high resolution large-format drawing, please watch your free space on the disk.

Setup steps

2. Starting the Program

When you install the program, the shortcut icon is created in the program menu and desktop. Once you select one of the shortcuts, "ITF Viewer" will start.

In addition, when you open ITF file directly by double-click, ITF Viewer will start as well.



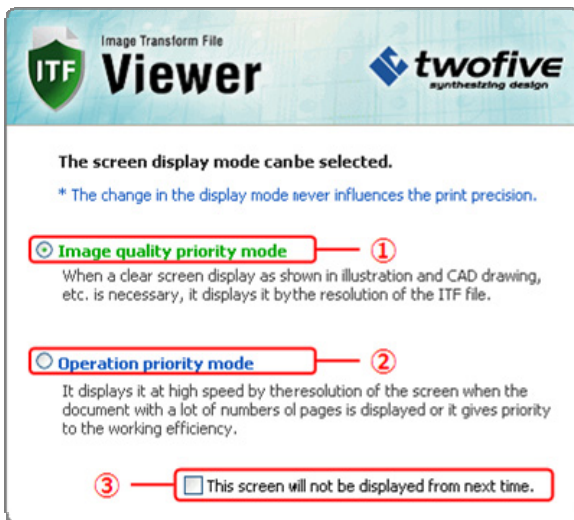
▲Desktop Icon



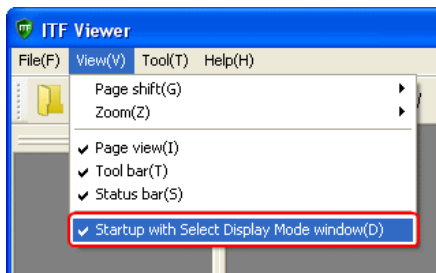
▲Program Menu

When ITF Viewer is started, below mode selection screen will be displayed.

Please select the screen display mode that matches with the characteristics of the ITF file you want to browse.



- ① If you select this option, the ITF file will open with "Image quality priority mode".
"Image quality priority mode" will display ITF file resolution as is.
When you need to display a file with sharp image on the screen, such as CAD drawing or illustrations, please select this mode.
- ② If you select this option, the ITF file will open as "Operation priority mode".
"Operation priority mode" will display image quickly using resolution of screen resolution.
If you want to view a large number of pages, or if you prefer to work faster to raise work efficiency, please select this mode.
- ③ If you check here, this screen will not be displayed from the next time startup.
This function can be activated from "View" Menu.



If you open ITF file directly, and choose display mode from the mode selection screen, the ITF file will immediately start reading the file.

3. Close the program

The following methods, same as the other general applications are available to close the program.

- Click the [X] button on the top right of the screen.
- Click [File] - [Close] in the main menu.
- Right-click on the title of the main screen to call out the system menu, and select [Close].

4. Outline of main screen

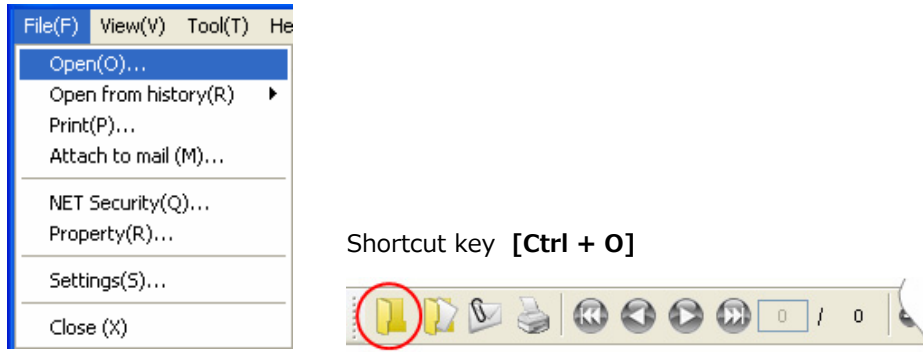
Any of the operations in the ITF Viewer can be performed from this main screen.



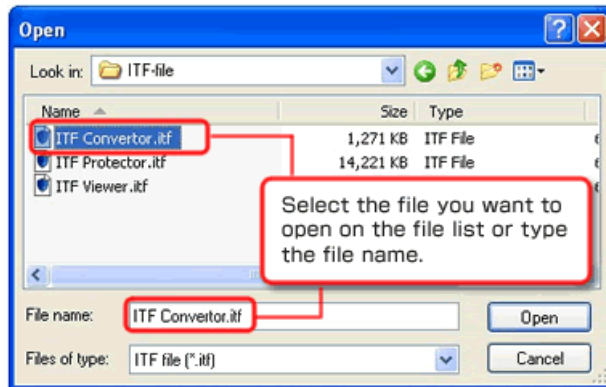
5. Open file

When ITF Viewer is started up, it is in the state that no files have been open, so nothing is displayed.

By opening the ITF file, you can browse the contents of the file.



When you click on the icon above, "Open" screen will appear.



By clicking **[Open]** button, it will start file reading.

However, in you are in an environment where you cannot connect to the Internet, you will not be able to open ITF file, which has expiration-date security or Net security.

You can start browsing from the page that is been done loading.

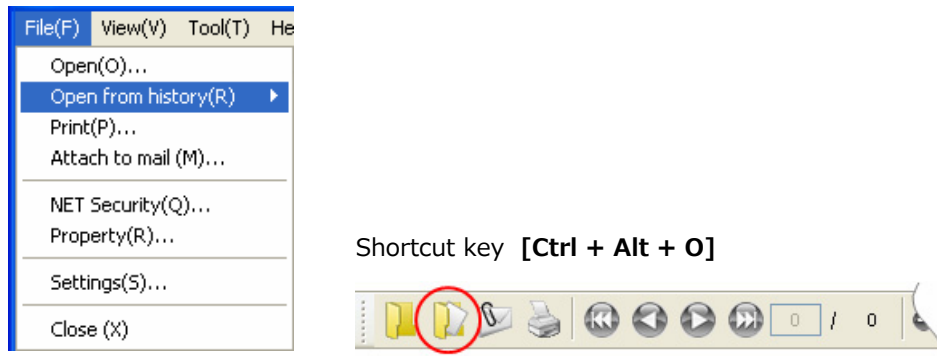
Usually, ITF file, which contains more than one page will load files by order from the first page, although if you want to see a page preferentially, please select the page from the page view.

Selected page loading will take precedence.

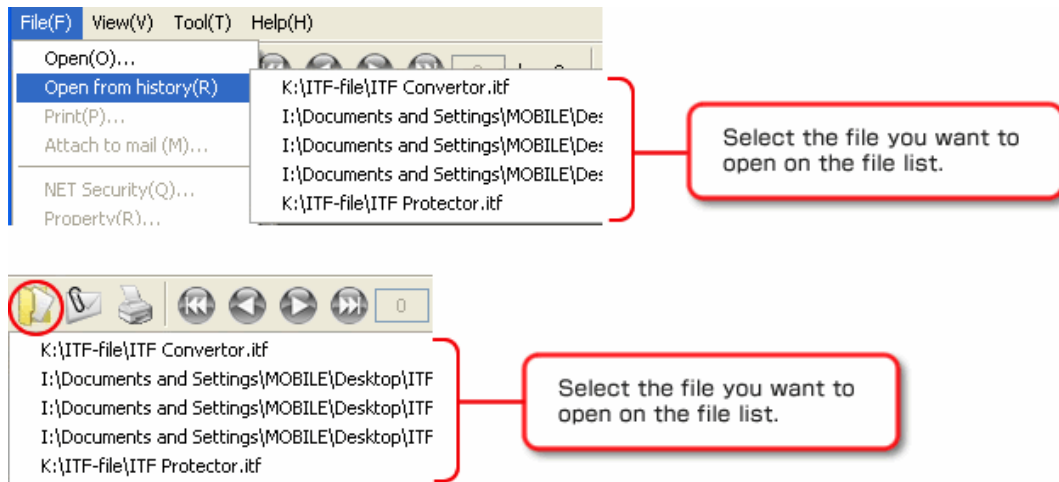
6. Open file from history

You can select and open the file from the recorded file list, which had been opened in the past. You can change the recordable history number.

(Please see **18. Organize the Configuration** for the setting method.)



When you click on the icon above, the list of history will be displayed below icon. It is displayed with the order from recently opened files.



File loading will begin.

However, if you are in an environment where you cannot connect to the Internet, you will not be able to open ITF file that has expiration date security or Net security.

You can start browsing from the page that is been done loading.

Usually, ITF file, which contains more than one page will load files by order from the first page, although if you want to see a page preferentially, please select the page from the page view.

Selected page loading will take precedence.

7. Close file

ITF file is a read-only file, so you cannot edit once the file created.

Therefore, there is no need to close any opened file, or check overwriting or check unsaved file.

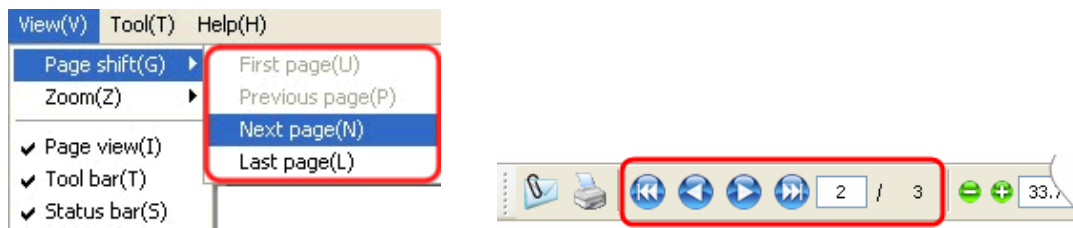
To close the file, please exit "ITF Viewer".





8. Switch the display pages

ITF file can combine multiple pages into a single file.

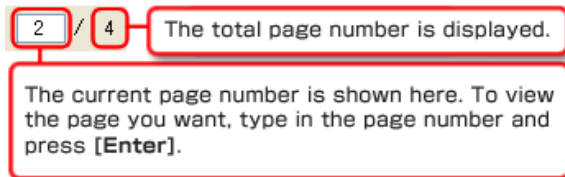
However, only one page can be displayed in the main view.

To view other page, you need to switch the page.



-  Display the top page.
Shortcut key **[Ctrl + Home]**
-  Display the previous page.
Shortcut key **[← + Home]**
-  Display the next page.
Shortcut key **[→ + Home]**
-  Display the last page.
Shortcut key **[Ctrl + End]**

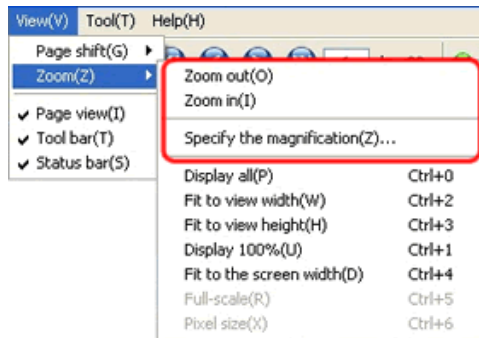
- Specify the page to be displayed





- * In addition, you can also switch the page by using "page view".
For more information, please see **12. Use the page view.**

9. Zooming

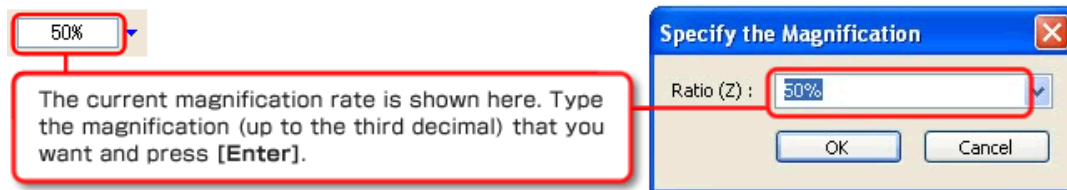
Zoom state right after loading ITF File is the state that zoomed to fit entire page in the main view. With ITF Viewer, you can switch the display magnification ratio, within the range of 10 – 6400%, of your choice.



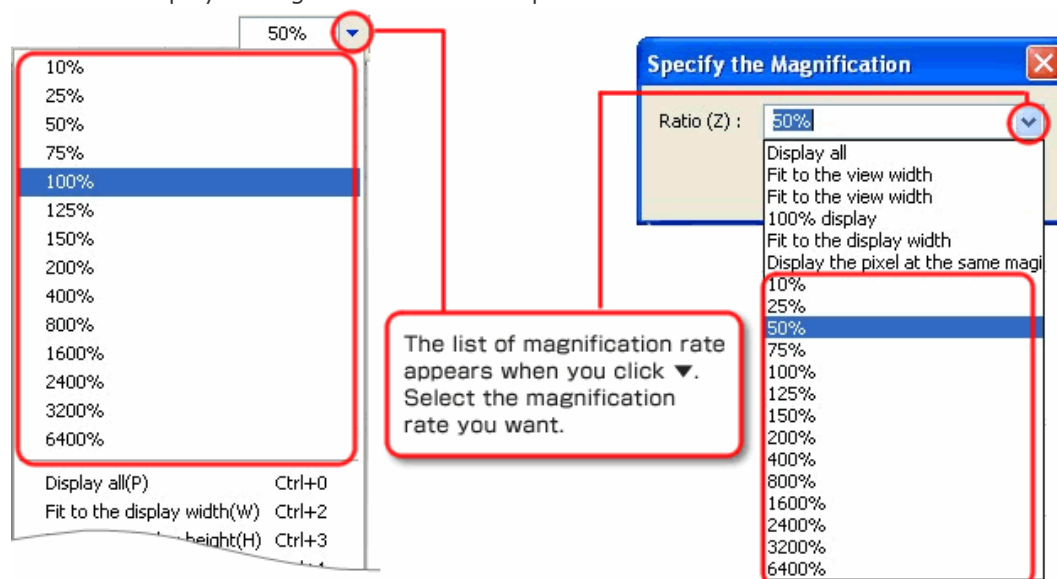
 Zoom out 1/2 times from the current magnification ratio.
Shortcut key [-]

 Zoom in 2 times from the current magnification ratio.
Shortcut key [+]

- Specify the magnification ratio and perform zoom

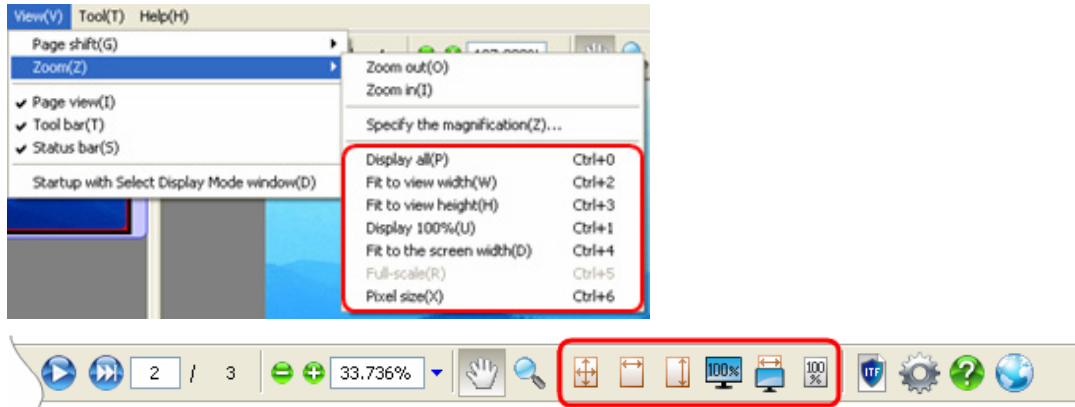



- Select the displayed magnification ratio and perform zoom





10. Use the fixed zooming function


In order to use the zoom function more convenient, you can use zoom using automatic calculation function, depend on your purpose.





 Zoom in the form to fit the current main view.
Shortcut key **[Ctrl + 0]**

 Zoom in the form to fit the width of current main view.
Shortcut key **[Ctrl + 2]**

 Zoom in the form to fit the height of current main view.
Shortcut key **[Ctrl + 3]**

 Set the magnification at 100%.
Shortcut key **[Ctrl + 1]**

 Zoom in the form to fit the screen width.
Shortcut key **[Ctrl + 4]**

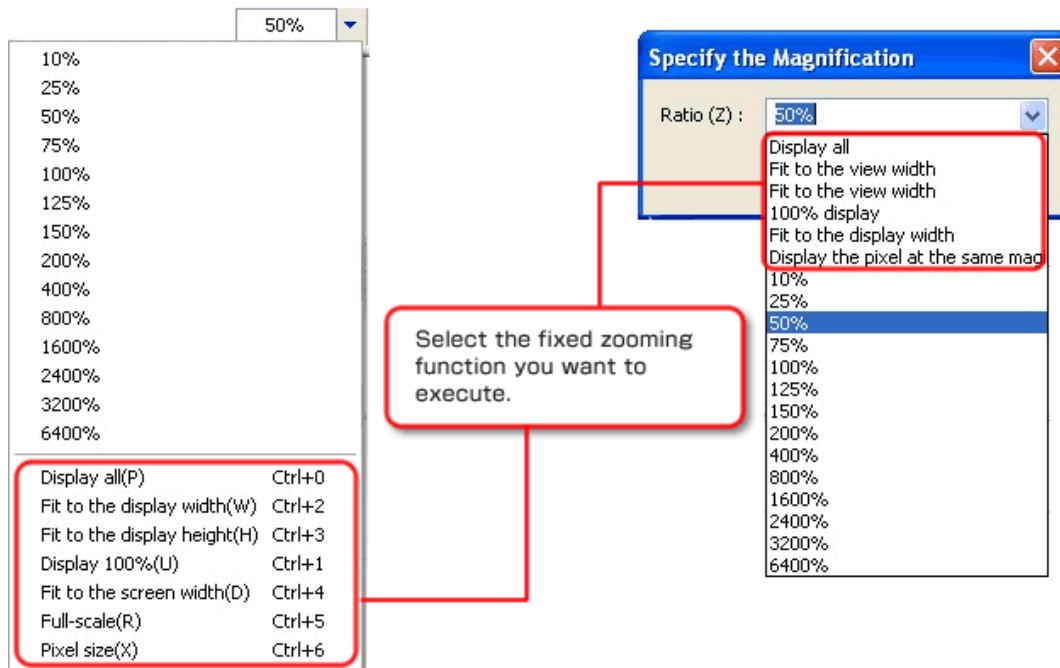
 Display the form in the actual scale.
The width and height of screen need to be specified in the configuration of ITF Viewer in advance.
The data can be shown correctly in the proper configuration even though the screen resolution rate of WINDOW is different from the width and height that you specify.
Shortcut key **[Ctrl + 5]**

Pixel size (in the menu)

To use the same magnification as the pixel, the data is automatically calculated.
However, if you do not put a check on **[Display by the resolution of file]** in the "Configuration" screen, the command does not appear in the menu.

Shortcut key **[Ctrl + 6]**

In addition, you can even perform above command from the zoom change list.



11. Use the main view


You can freely browse selected page in the main view.


There is a variety of functions incorporated for zoom and scroll, for the convenient purpose for users.

11 - 1. Change the operation mode



For the operation of the main view, two modes are available as below.

 Hand mode is used to scroll the screen.
Shortcut key **[Ctrl + H]**

 Zoom mode is used to zoom the screen.
Shortcut key **[Ctrl + Z]**



Operation Mode change can be performed by clicking on the appropriate mode button.

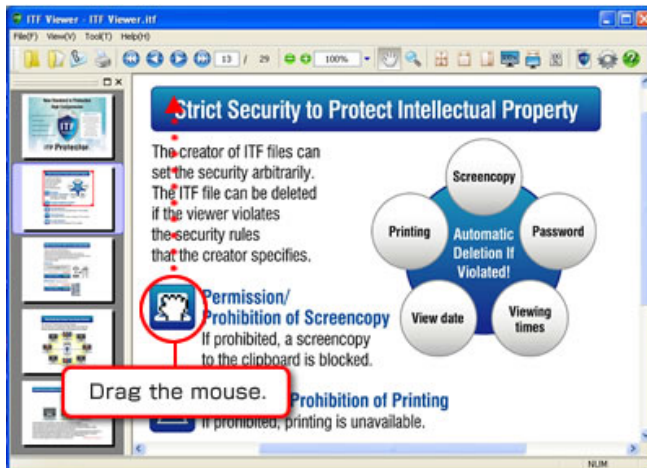
In addition, the mode that is currently selected will be shown as an icon, which is already pressed.

In above case, this means that hand mode is enabled.


11 - 2. Hand mode

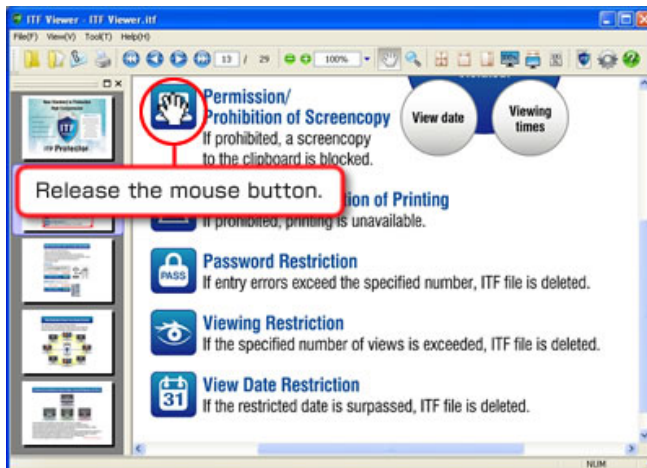
In hand mode, the mouse cursor becomes a palm, so you can scroll as you draw the position you want to see with the left button or the movement of the mouse.

1. First, click left button of the mouse at the position you want to grab.
Then, the mouse cursor will become  **grabbing** from the  **palm**.
2. Then, drag the mouse to the position where you want to pull.



3. If you are done dragging to the desired position, release mouse left button to finish the screen scroll.

(Mouse cursor will return to the  **palm** again.)




11 - 3. Zoom operation during the hand mode use

You can perform part of zoom mode function while in the hand mode, using little bit of keyboard operation.

- **Zoom in**


Press the **[Alt]** key during the hand mode.

While pushing the key, mouse cursor will be changed to  icon.

At this state, you can zoom in 2 times magnification ratio from the current view by left-click of the mouse.

- **Zoom out**

Press the **[Ctrl]** key during the hand mode.


While pushing the key, mouse cursor will be changed to  icon.

When you left-click the mouse in this state, it will zoom out 1/2 times from current magnification ratio.

11 - 4. Zooming mode

In zoom mode, mouse cursor will become magnifying glass form, and you can perform various types of zoom with the left button or by the movement of the mouse.


- **Zoom in**

During the zoom mode, mouse cursor will be  as a default.

Simply left-click the mouse, the display will zoom in 2 times more from the current magnification ratio.

- **Zoom out**



Press **[Ctrl]** key during the zoom mode.

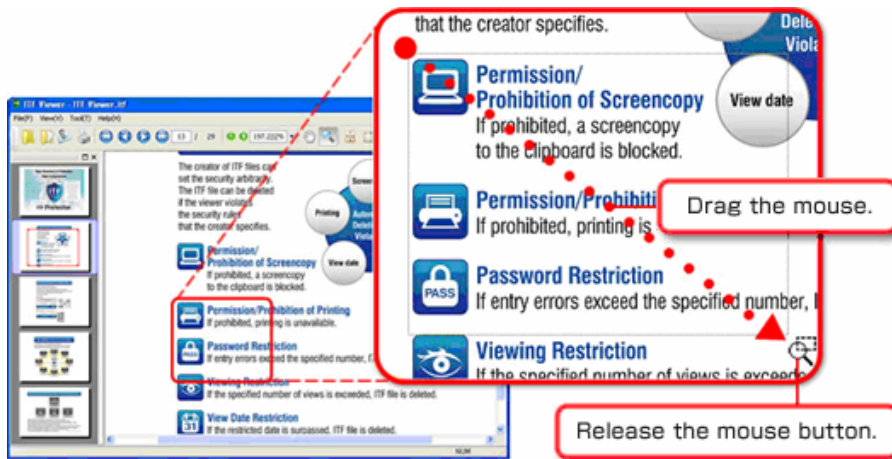
While pushing the key, mouse cursor will be changed to  icon.


When you left-click the mouse in this state, it will zoom out 1/2 times from current magnification ratio.

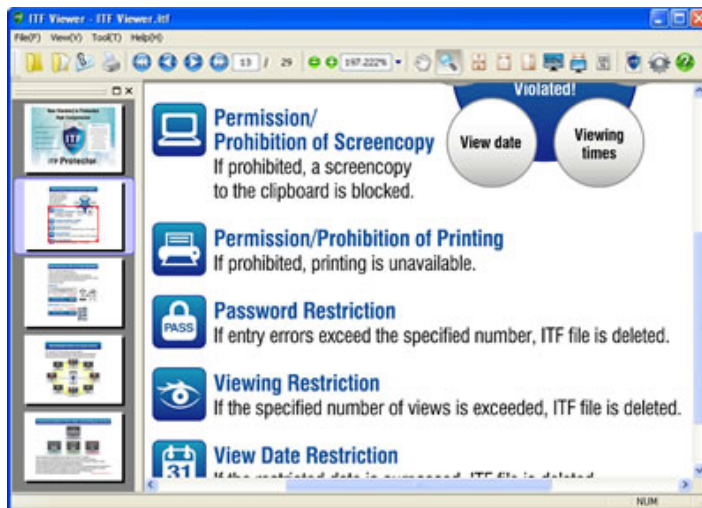
- **Area selecting zoom**

By using left-click and the movement of the mouse, you can specify the area (square) you want to see, and you can zoom up the area to fit to the main view.

1. First, press the left button of the mouse to the first position point (For example, upper left corner) of the area you want to enlarge. From that point, drag the mouse a little, and the mouse cursor will change from  to  state.
2. Next, from the first point, drag the mouse to the second position point (For example, lower-right corner) of the area you want to enlarge. (While dragging the mouse, the area selected will be enclosed by a dotted line.)



3. When you have decided the target area to enlarge, release the mouse left button to complete the zoom. (Mouse cursor will return to  state again.)



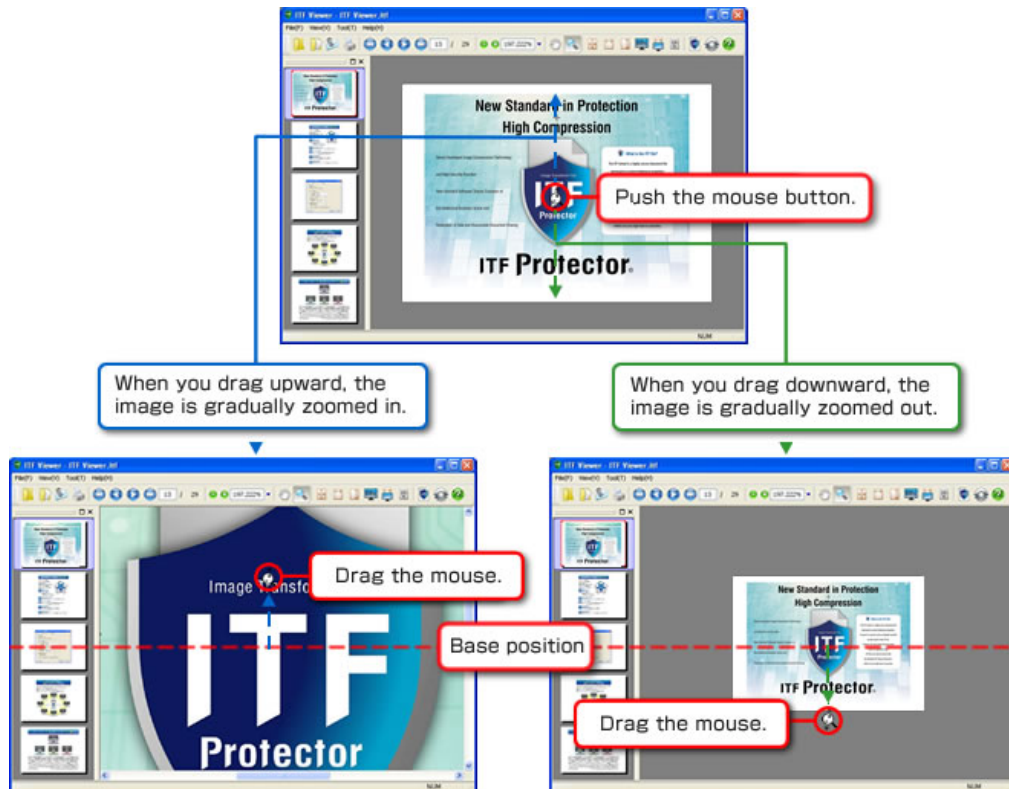
- **Fuzzy zoom**

You can zoom into the image with the keyboard and left mouse button. The feature is in fact, you can sensuously subtle the magnification adjustment.

1. Press **[Shift]** key during the zoom mode.

While pressing the button, the mouse cursor will become  to  state.

2. Next, press the left button of the mouse to the position, where you want to make the area as a center.

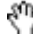


When the magnification rate has become your desired rate, release the left button of the mouse to complete the zoom.

11 - 5. Hand operation during the zoom mode use

You can perform the operation function equivalent to the hand mode, in the zoom mode.

Press **[Space]** key during the zoom mode.

While pressing the button, the mouse cursor will changes to  form, so that you can be able to operate it as same as you can do while in the hand mode.

* Please refer to the **11 - 2. Hand mode** for hand mode operation.

11 – 6. Cancellation during the zoom operation

When you click right mouse button while selecting “fuzzy zoom” magnification, or selecting area of “area selecting zoom”, you can cancel the operation and return to the state before starting the zoom.

12. Use the page view

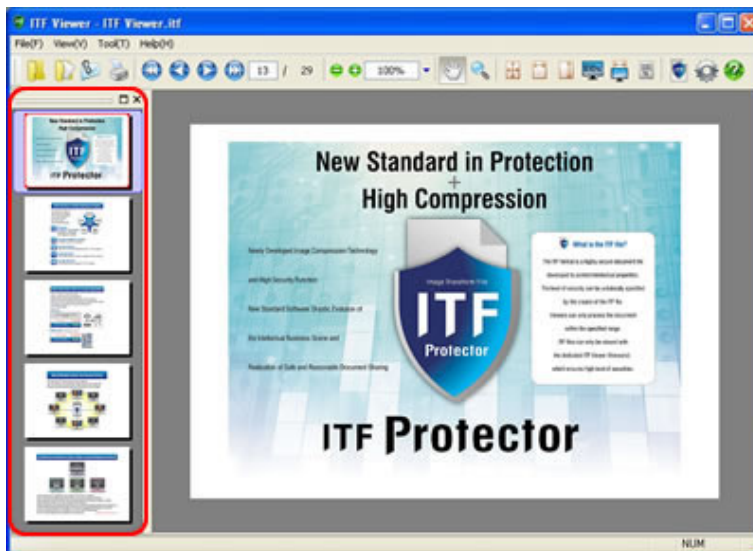
In Page View, you can see all images contained in the ITF file, at once as reduced images. In addition, you can also perform selection page switching with simple hand scroll or using area select zoom.

Useful feature is provided to help browsing the file while looking at the overall layout.

12 - 1. Basic operation of the page view

Thumbnail of all pages will be displayed in page view.

However, if there are pages that do not fit to the screen, you will have to scroll the “scroll bar” that appears on the right hand side of the page.



In addition, as for this thumbnail, not only left hand side of the screen, you can move it to dock to the right hand side, or make it a float state.



▲ Docking to the right



▲ Float status

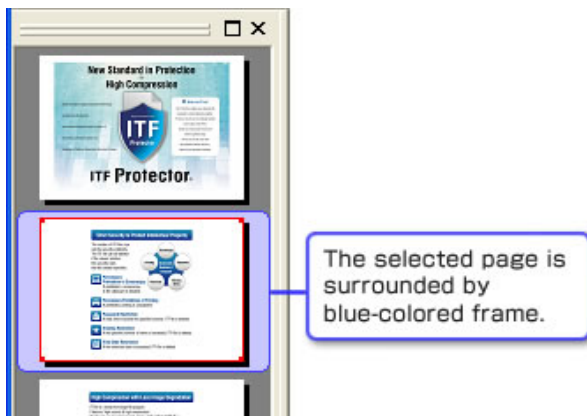


12 - 2. Switch the selected page

Just click left mouse button on top of the page you want to select, then you can select corresponding page.

Pages you have selected will be displayed in the main view.

In addition, the current selected page is surrounded by the **blue-colored frame**.




12 - 3. Area confirmation and Hand scrolling displayed on the main view

The selected page is displayed by the **red-colored frame**.


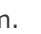



Displayed by the red-colored frame.

In addition, if you bring the mouse cursor in this red frame, it will change to  form. When you grab this red frame as same way as the hand mode of the main view, you can easily scroll the main view to the desired position, while looking at the entire page.

12 - 4. Easy area selection zoom

The red frame, introduced in 12-3 has a small square shape at the four corners.

When you move the mouse cursor onto the square, the mouse cursor form will change from  to  or  form.

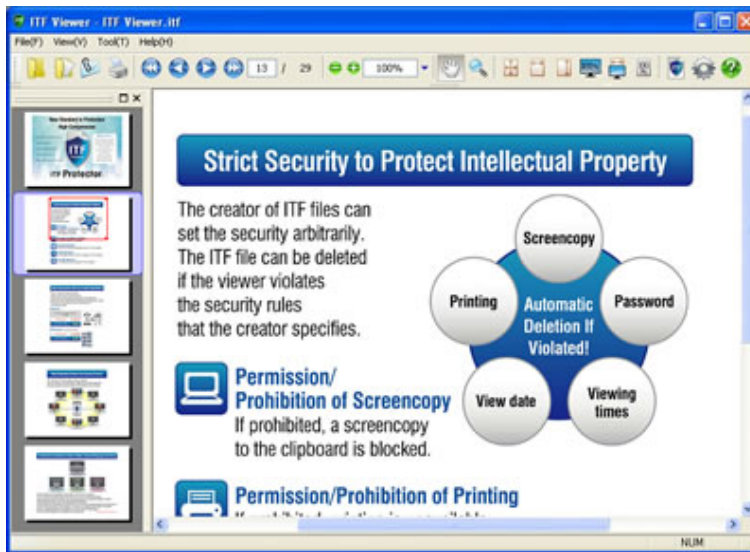


First, fit the mouse cursor to the corner of the red frame you want to stretch the area to, and click the left mouse button.

If you drag the mouse from there, the area of the red frame will be stretched out.



Once you decided the destination area, release the left mouse button to complete the zoom.



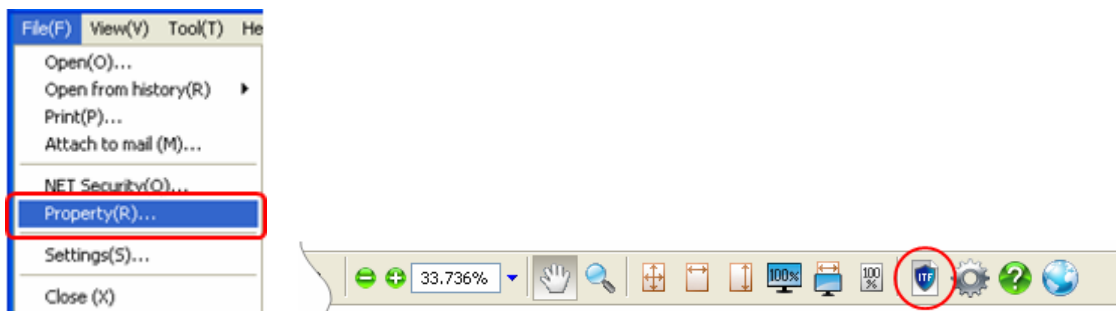
* It will perform zoom by “calculating the rectangle” from the small scale image, so the accuracy will be slightly less than the “Area Select Zoom” function that could be performed from the main view.


13. See the property of file

With ITF file, you can perform “high compression imaging” of the original document, and as being creator side, you can perform configuration of various securities.

In addition, in order to reproduce the original document as accurately as possible, it can take over a variety of information, such as page setup and resolution setup.

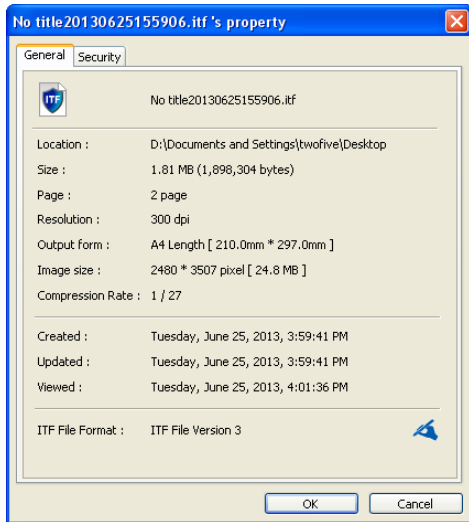
With ITF Viewer, you can browse this information as long as the author allows.



 Shows currently opened ITF file properties.
Shortcut key [Ctrl + D]

- **General tab**

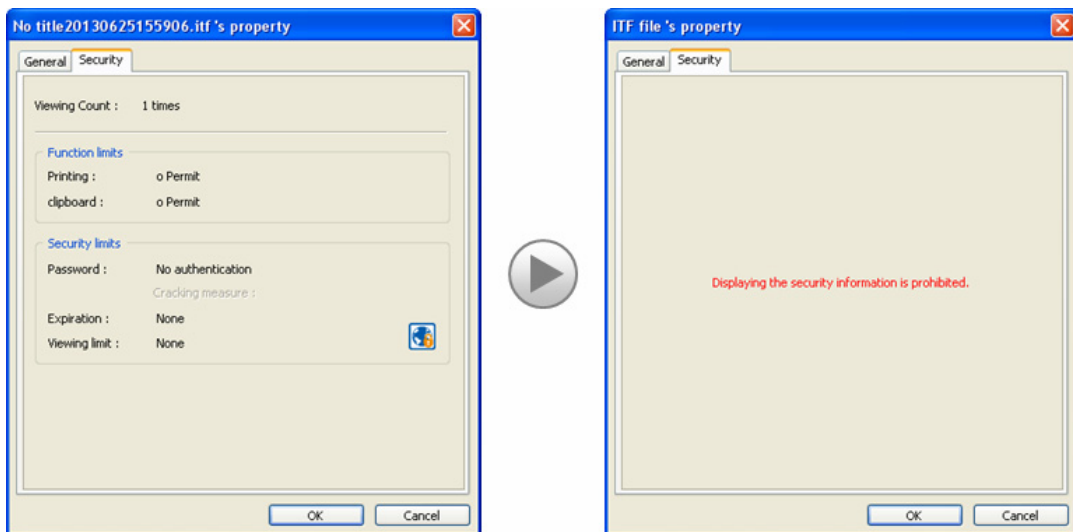
Anyone can browse general contents of a file, such as file information or file compression rate.




- **Security tab**




Topics related to the file security will not be displayed, if the creator of the file did not give permission.

In addition, if you are not connected to the Internet and the ITF file is using the NET security, it will not be displayed as well.



• List of Properties

Base items	Display	Discription
File name	–	File Name
Location	–	Folder name of the storage location (full path)
Size	Size (Byte size)	File size
Page	X Page	The total number of page
Resolution	X dpi	Resolution at the time of creation
Output form	Form name length/Rotated [Specification size]	Form setting at creation
Image size	X * Y pixel [bitmap size]	Vertical and horizontal and full size of 1 page
Compression Rate	1/X	Comparison compression ratio of full-color bitmap
Created	Month Day Year, H:M:S	Date and time file was created
Updated	Month Day Year, H:M:S	Date and time the file was updated
Viewed	Month Day Year, H:M:S	Date and time the file was last viewed
ITF File Format	ITF File Version X	ITF file version The ITF file created in your PC is displayed as  icon.

Security items	Display	Discription
Viewing count	X times	Cumulative views until now
Cracking count	X times	Cumulative number of times authentication cracking until now
Printing	Permit, Not permit	Print advisability
Clipboard	Permit, Not permit	Image copy to clipboard advisability
Password	Authentication is required or not	Password setting existence
Cracking measure	Permit until x times, Not permit	Allowed number of authentication errors (if none, it is unlimited)
Expiration	yyyy/mm/dd to, None	Expiration setting existence
Viewing limit	Permitted X times or None	View limit setting existence
-		NET security is set to this ITF file
		Media limit is set to this ITF file
		You can only view this ITF file from CD(DVD)-ROM.

14. About security

For ITF file creation, author will apply various functions and security related limits. Users using ITF Viewer to browse the file, the browser will be accordance with the restrictions. This chapter describes what the limitations are, and what kind of movement and operation it would become.

① Function restrictions

- Print limit

ITF file with the print limit cannot run “print” command literally.

This function can be used to prevent paper-based information leakage.

- Clipboard limit

When the ITF file with the clipboard restriction is opened, and yet, if the ITF viewer is not a minimized window (Stored in the task bar state), you will not able to copy the screen to the clipboard from a “Print Screen” key on the keyboard.

This function is used to prevent image information leakage.

② Security restrictions

- Password restrictions

If you try to open the ITF file with the password restrictions, the screen that requests password authentication will appear before file actually opens, and you cannot browse the file until you put the correct password.

This restriction is used when to prevent information leakage to the person that does not share the password.



In addition, cumulative number of password authentication errors is also counted, and in some cases, if the password authentication error is more than a specified number, it would be regarded as a cracking act (Brute-force password), and there is a setting that can delete the file in such case. [\[Security violation\]](#)

- Expiration Date

With ITF file has an expiration date, and it has past the specified date, you will not be able to browse through it literally.

This function is used to a document that has time restriction, etc.

The border line is the change of date, which is midnight.

When you try to open a file that is expired, the file will be deleted. [\[Security violation\]](#)

- Browse number deadline

Each time ITF file is opened in ITF Viewer, it will count the cumulative number of views. Once ITF file with View time limit is been viewed specified number of times, it will not be able to be browsed from the next time.

This function is used to prevent diffusion, etc, when file is spilled.

When exceeded the views limit, the file will be deleted. [Security violation]

- Media fixation

ITF file that has the media fixation will not be able to be browsed outside of media specified by creator, such as an SD card or USB memory.



- CD-ROM/DVD-ROM fixation

You cannot view the ITF file that is fixed to the CD-ROM/DVD-ROM, unless it is being recorded in the DVD-ROM and CD-ROM.



③ ITF file self-destruction at security violation

"ITF Files Self-Destruction" is a mechanism when above item ② is described as [Security Violation] state, the ITF File will disappears without trace,

In case of the high degraded important information, there is

*"Creator of the ITF file sets the restrictions,
and extinguishes the file when there is a violation",*

and with this function, it enables the information exchange more securely.

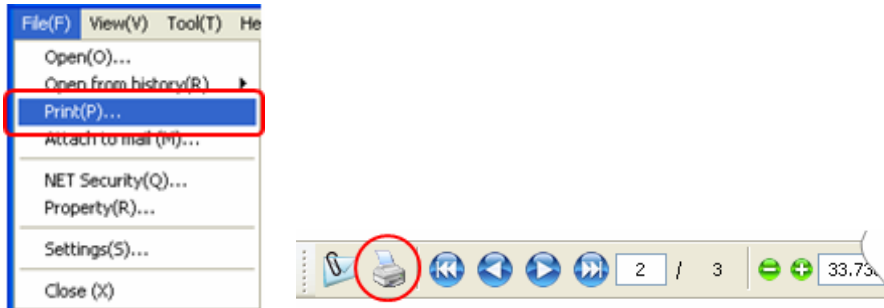
④ NET Security

Security settings are managed on a Web server, and Security setting on the Web server will be applied to the files that are encoded by e-mail attachments, etc.

This is used to keep viewers to follow the security settings strictly.

15. Printing

With ITF Viewer, you can perform various printing methods based on the printing information recorded in the ITF file.



Print out the currently opened ITF file.

Shortcut key **[Ctrl + P]**

When you click the above icon, "Print" screen will appear.

Select the printer to be used.

Display the property screen to change the settings of selected printer.
Please see the manual of your printer because the settings vary among printers.

Specify the number of pages to be printed.
Printable up to 99 pages at one time.

Check here for collate printing.
This setting the filing of the printed pages, but the printing speed slows down.

Specify the paper feeding method.

① Specification of the print page

- All Pages

Print all pages which are contained in the ITF file.

- Select Pages

Only prints the page that you filled out in the input area.

If you connect words with "-"(hyphen), the pages connected will be eligible.

Also, please separate each specified pages with symbols, such as "," (comma) or " " (space).

* If in case, the specified page order is reversed, or duplicated, ITF will automatically modifies and prints the page by order.

Input example 1
IF you want to print the pages: 1 3 5 6 7 8 11 15 16 17 18
 Enter 1, 3, 5-8, 11, 15-18. (You can also enter 1 3 5-8 11 15 16-18)

Input example 2
IF you insert: 5, 7, 9, 4, 10, 2, 15-18, 17, 3-5
 It will be printed in the order of 2 3 4 5 7 9 10 15 16 17 18

② Specification of the form

- Automatically select from the files

It will reproduce original print information when ITF file was created. However, if there is no corresponding paper in the selected printer, you cannot select this item.

The screenshot shows the 'Specify the paper' dialog box. The radio button for 'Automatically select from the files(T)' is selected. Below it, the 'Specify the paper size(Z)' dropdown menu is open, showing 'A4' as the selected option. A red box highlights the dropdown menu, and a callout bubble points to it with the text: 'The name of selected form is displayed here.'

- Specify the paper size

User can choose any paper to print.

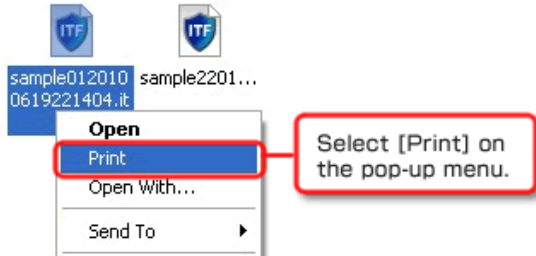
The screenshot shows the 'Specify the paper' dialog box. The radio button for 'Specify the paper size(Z)' is selected. Below it, the 'Specify the paper size(Z)' dropdown menu is open, showing 'B5 (JIS)' as the selected option. A red box highlights the dropdown menu, and a callout bubble points to it with the text: 'Select the arbitrary form on the form list of selected printer.'

When you do not check [Fit to the paper size to output], printing is performed without changing the resolution rate. In this printing process, whether or not the image is fitted to the form size is not considered. However, when you check here, printing is performed to fit the image to the form size through the automatic scaling. The resolution adjustment is not made in this process.

When all print settings are completed, please click the **[Print]** button.
 Start Printing.

16. Directly print from the file

You can directly print out ITF file without opening ITF Viewer.
Right click on the ITF file you want to print out, and the pop-up menu will appear.
Choose **[Print]** from the menu displayed.



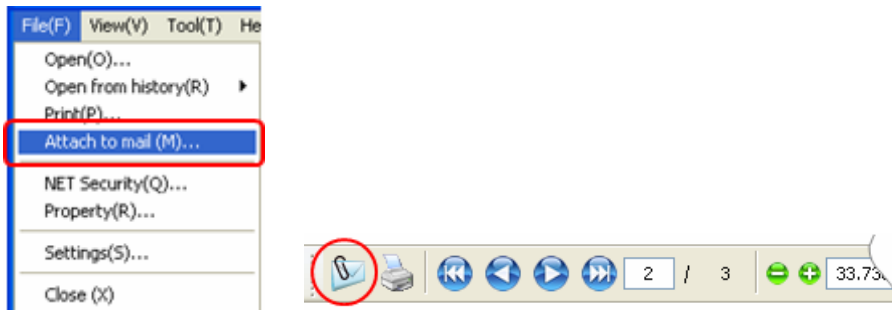
“Print” screen will be displays as same as general print function.
If ITF file has a password authentication settings, Authentication screen will be displayed, and you will be asked to insert password before displaying “Print” screen.


Perform print settings, and click the **[Print]** button to complete the session

* For print settings information, please refer to **15. Printing.**

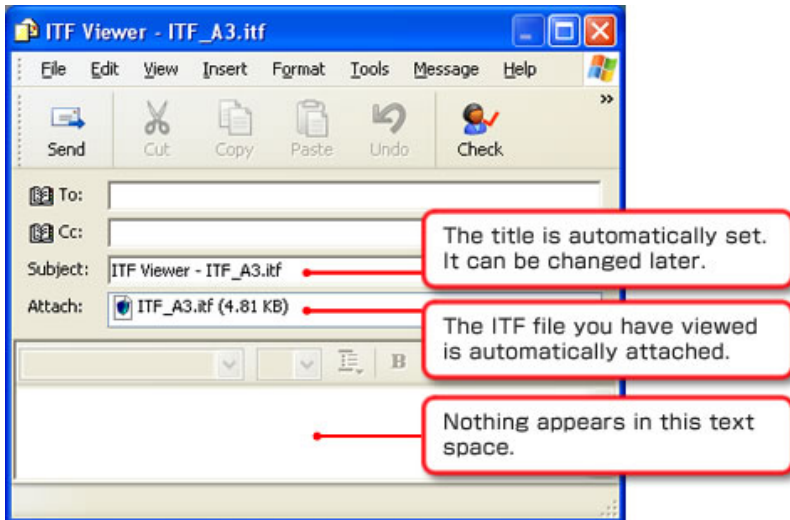
17. Attach to mail

You can attach currently browsing ITF file to a new e-mail.



 Attach currently browsing ITF file to an e-mail.
Shortcut key **[Ctrl + M]**

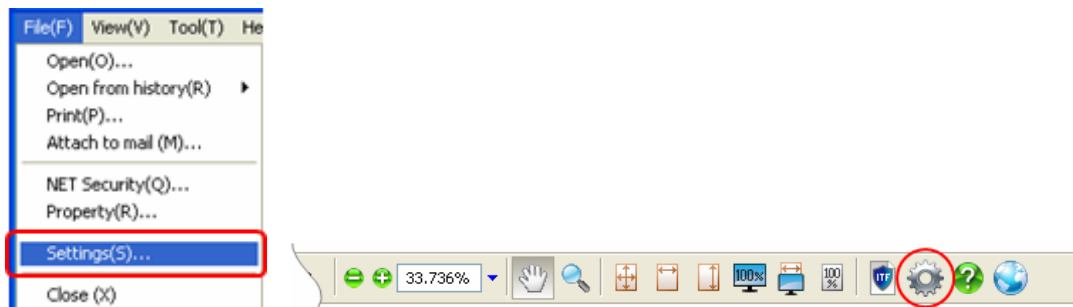
When you click the above icon, the following new e-mail screen will appear with ITF file attached.




After that, just fill out a destination and a body, as you usually send the e-mail, and click **[Send]** button to easily send an e-mail that has ITF file attached.

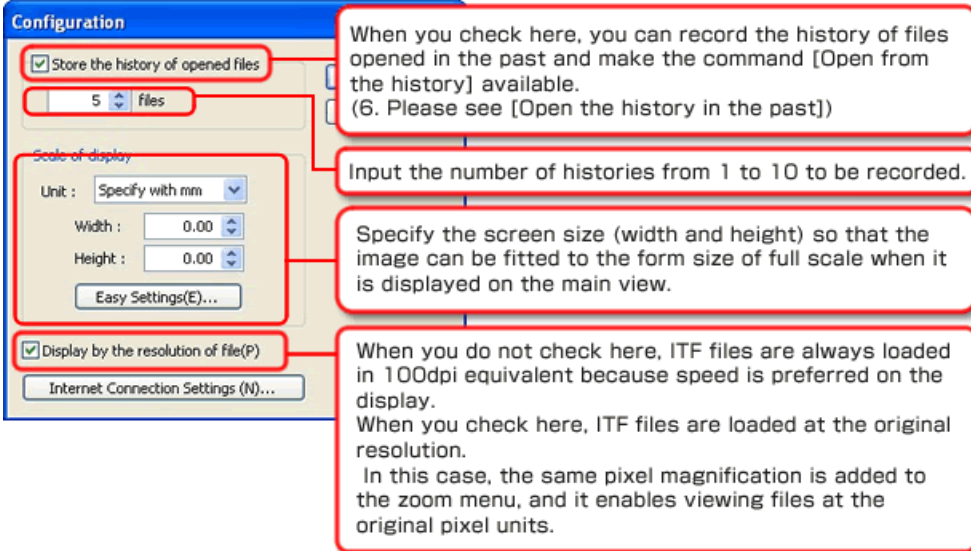
18. Organize the configuration

Users must specify the values that ITF Viewer requires to operate.



 Change preferences for ITF Viewer.
Shortcut key **[Ctrl + K]**

When you click on the icon above, the “Configuration” screen appears.



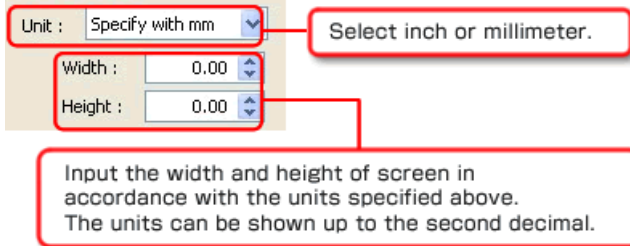
The Configuration dialog box is shown with several settings highlighted by red boxes and callouts:

- Store the history of opened files:** A checked checkbox. Callout: "When you check here, you can record the history of files opened in the past and make the command [Open from the history] available. (6. Please see [Open the history in the past])".
- Number of histories:** A spinner box set to 5. Callout: "Input the number of histories from 1 to 10 to be recorded."
- Scale of display:** A section containing:
 - Unit:** A dropdown menu set to "Specify with mm". Callout: "Select inch or millimeter."
 - Width:** A spinner box set to 0.00.
 - Height:** A spinner box set to 0.00.Callout: "Specify the screen size (width and height) so that the image can be fitted to the form size of full scale when it is displayed on the main view."
- Display by the resolution of file(P):** A checked checkbox. Callout: "When you do not check here, ITF files are always loaded in 100dpi equivalent because speed is preferred on the display. When you check here, ITF files are loaded at the original resolution. In this case, the same pixel magnification is added to the zoom menu, and it enables viewing files at the original pixel units."

• Scale of display

In this setting field, if you enter the exact screen size that you have measured with a ruler, etc, you will be able to see the actual paper size layout in the main view.

In addition, if you set 0(zero) in either width/height; you will not be able to use **[Full-scale]** command.

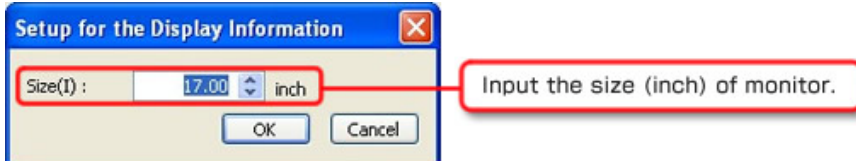


A close-up of the Scale of display settings:

- Unit:** A dropdown menu set to "Specify with mm". Callout: "Select inch or millimeter."
- Width:** A spinner box set to 0.00.
- Height:** A spinner box set to 0.00. Callout: "Input the width and height of screen in accordance with the units specified above. The units can be shown up to the second decimal."

When you click the **[Easy settings]** button, the “Setup for the Display” screen will be displayed.

In case you say “There is no strict values needed to be input”, you could automatically calculate the “exact size of the display” from this screen.



The Setup for the Display Information dialog box is shown with a callout:

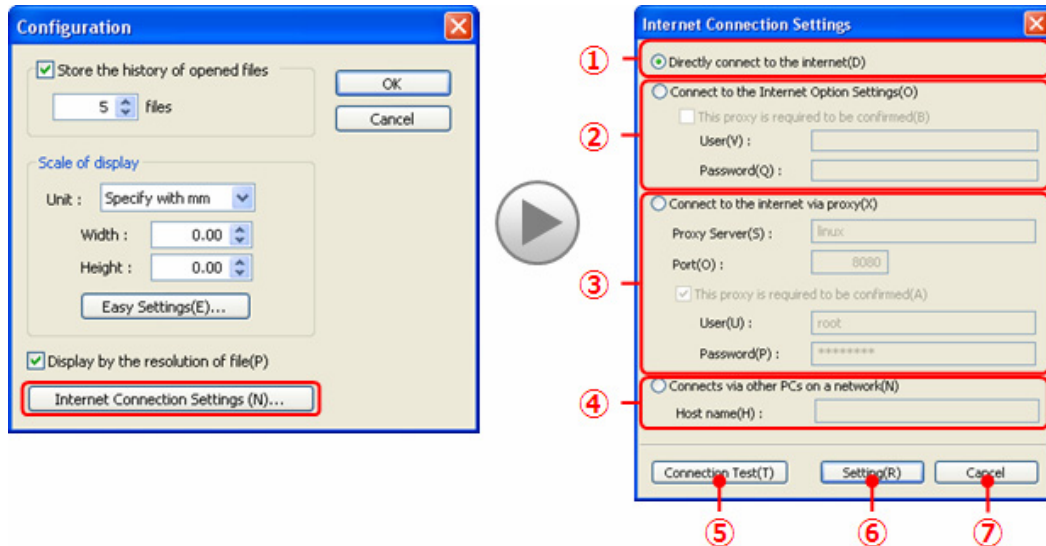
- Size(I):** A spinner box set to 17.00 inch. Callout: "Input the size (inch) of monitor."

When you click **[OK]** button, the automatically calculated width and height will be entered in the exact size form, displayed in the Preferences screen.

- **Internet connection settings**

ITF Viewer requires internet connection in some behavior.

Please click the [**Internet Connection Settings**] button, and perform the Internet connection settings.

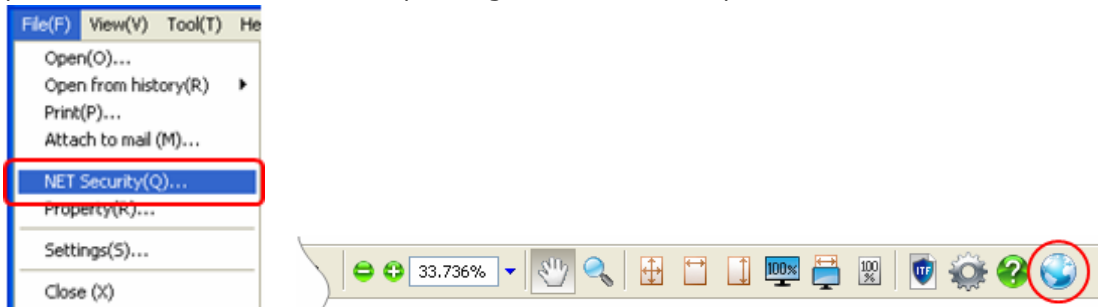


- ① If you can connect to the Internet directly, please select here.
- ② If you want to use the Windows Internet connection settings, please select here.
In addition, if the proxy server requires authentication when connecting, please put a check in [**This proxy is required to be confirmed**], and enter user ID and passwords.
- ③ If you are connected to the Internet through a proxy server, please select here and enter proxy server name (or IP address) and the port number.
In addition, if the proxy server requires authentication when connecting, please put a check on [**This proxy is required to be confirmed**], and enter a User ID and Password.
- ④ If you are to activate through our products “License Manager”, please select here and enter destination PC name and the IP address.
License Manager is a reliable program that carries out on behalf of the operations that requires internet connection for PC, that is resides as a service, and be connected to the Internet on the network (WAN or LAN), and for PC that is using our licensed products, and is prohibited to connect to the Internet on the network.
License Manager is available as a free download from “My ITF”.
- ⑤ Please click this button when you completed the setting for the required item.
You can test to see if you can actually connect to the Internet from the setting on the screen.
- ⑥ Apply / Save the settings and exit this screen.
Before you click this button, please check the Internet connection by performing connection test.
- ⑦ Do not reflect the setting and exit this screen.

When all preferences are finished, you will complete the setting by clicking [**OK**] button.

19. Edit NET Security information

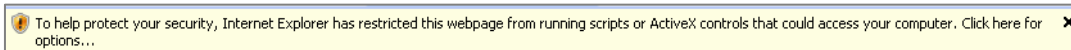
In case if the ITF file you are browsing is using the NET security, and it is created in your PC, you will be able to edit the security setting of the NET security.



Browser will be launched, and shows the site management of NET Security.

Shortcut key **[Ctrl + Q]**

There is a times, a warning message as shown below is displayed depend on your browser. Please continue the display by choosing "permission to view".



Please see **[How to Use This Page]** in each page within this site about how to use security configuration management site.

20. See help

When you are lost about how to operate ITF Viewer, you can see the online help over the internet at anytime.

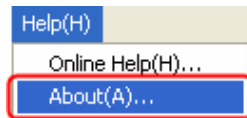


Start the browser to view the ITF Viewer online help.

Shortcut key **[F1]**

21. See version information

When you want to check if the currently using ITF Viewer is the latest version, please see version information.



Shortcut key **[Ctrl + A]**

